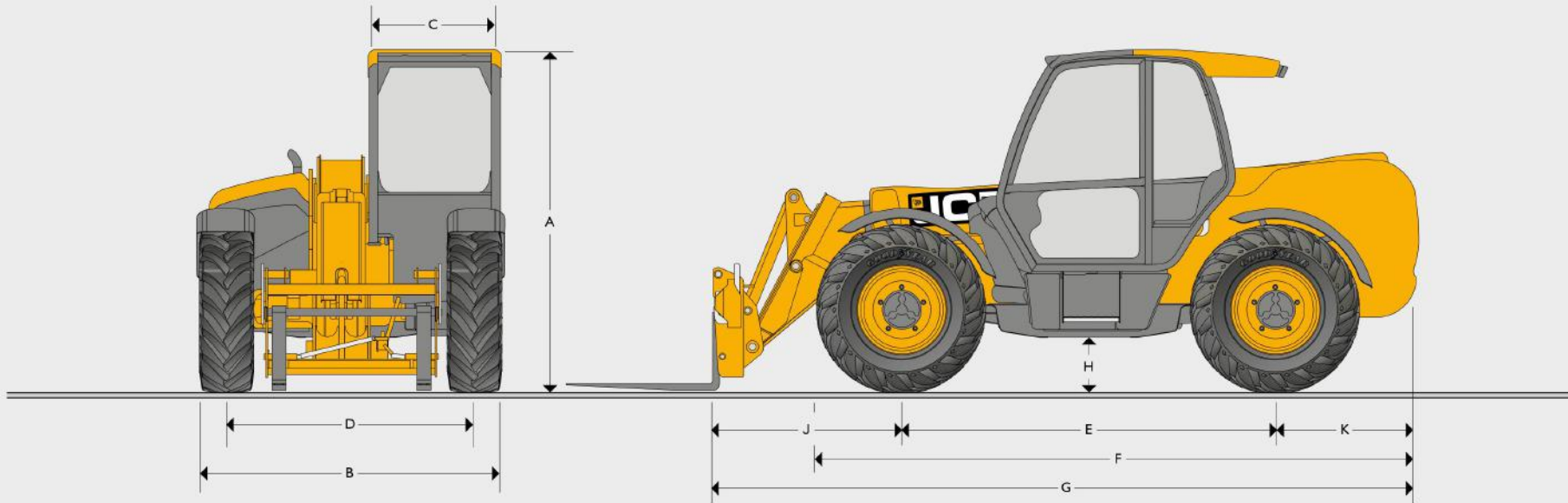


STATIC DIMENSIONS

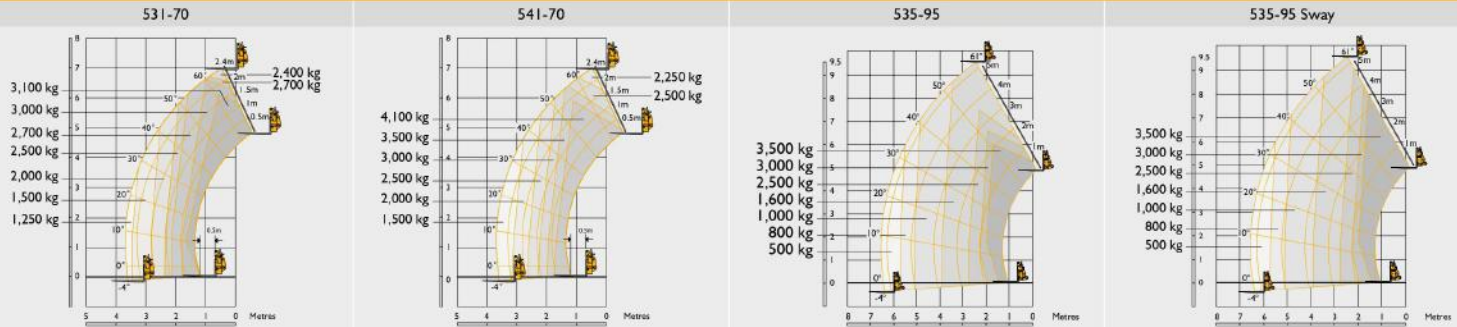


STATIC DIMENSIONS

Machine model		531-70	541-70	535-95	533-105	535-125 HiViz	540-140 HiViz	540-170	540-200
A	Overall height	m	2.49	2.49	2.49	2.59	2.59	2.69	2.72
B	Overall width (over tyres)*	m	2.23	2.23	2.36	2.35	2.35	2.44	2.44
C	Inside width of cab	m	0.94	0.94	0.94	0.94	0.94	0.94	0.94
D	Front track	m	1.81	1.81	1.87	1.87	1.90	1.90	1.97
E	Wheelbase	m	2.75	2.75	2.75	2.75	2.75	2.75	2.75
F	Overall length to front tyres	m	4.38	4.38	4.38	4.38	4.74	4.74	5.09
G	Overall length to front carriage	m	4.99	4.99	4.99	5.38	5.80	6.23	6.81
H	Ground clearance	m	0.40	0.40	0.40	0.40	0.40	0.40	0.41
J	Front wheel centre to carriage	m	1.25	1.25	1.20	1.62	1.68	2.11	2.39
K	Rear wheel centre to rear face	m	0.99	0.99	1.04	1.01	1.37	1.37	1.67
	Overall width with stabilisers fully deployed	m	NA	NA	NA	2.63	2.57	3.55	3.82
	Outside turn radius (over tyres)	m	3.7	3.7	3.7	3.7	3.75	4.10	4.1
	Carriage rollback angle	degrees	42.6	42.6	41.0	41.2	37.0	37.0	39
	Carriage dump angle	degrees	37.5	37.5	24.0	24.0	12.5	12.5	8.8
	Weight	kg	7060	7850	8215	8850	10066	10880	12060
	Tyres		15.5/80-24	15.5/80-24	15.5/80-24	15.5/80-24	15.5/80-24	15.5/80-24	17.5-25

* Type dependent

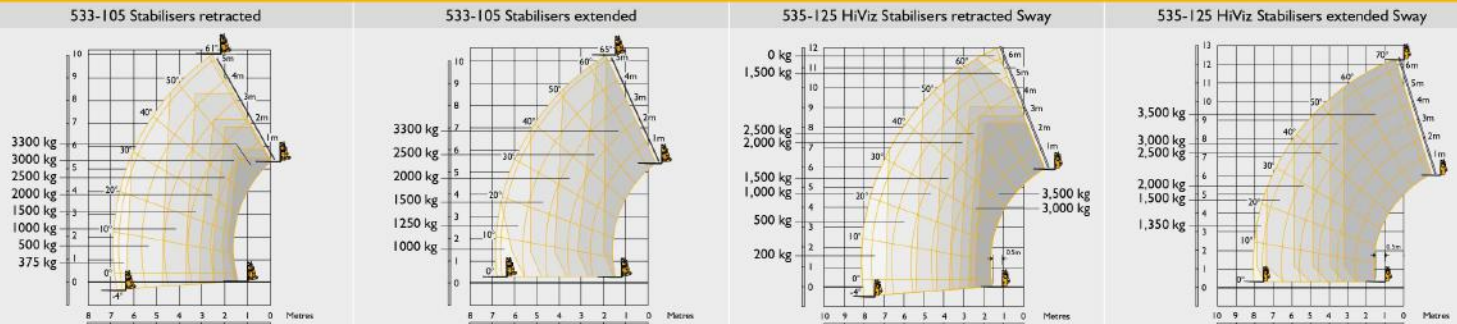
LIFT PERFORMANCE



Maximum lift capacity	kg	3100	4100	3500	3500
Lift capacity to full height	kg	2400	2250	1600	1600
Lift capacity at full reach	kg	1250	1500	500	500
Lift height	m	7.0	7.0	9.50	9.50
Reach at maximum lift height	m	0.54	0.54	2.49	2.49
Maximum forward reach	m	3.7	3.7	6.52	6.52
Reach with 1 tonne load	m	3.7	3.7	5.08	5.08
Placing height	m	6.3	6.3	8.78	8.78

Complies with stability test EN 1459 Annex B. Chassis Levelling (Sway) with stabilisers retracted (Sway angle ±9°).

LIFT PERFORMANCE

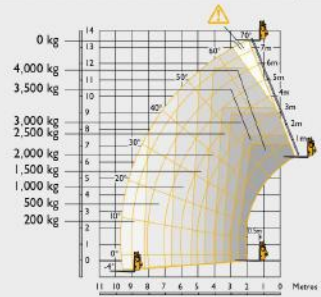


Maximum lift capacity	kg	3300	3300	3500	3500
Lift capacity to full height	kg	1000	2500	1500	3500
Lift capacity at full reach	kg	375	1000	200	1350
Lift height	m	10.22	10.22	11.6	12.27
Reach at maximum lift height	m	2.69	1.99	2.01	0.54
Maximum forward reach	m	6.83	6.83	8.06	8.06
Reach with 1 tonne load	m	6.83	6.83	5.31	8.06
Placing height	m	9.44	9.82	11	11.75

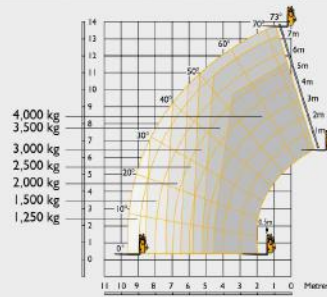
Complies with stability test EN 1459 Annex B. Chassis Levelling (Sway) with stabilisers retracted (Sway angle ±9°).

LIFT PERFORMANCE

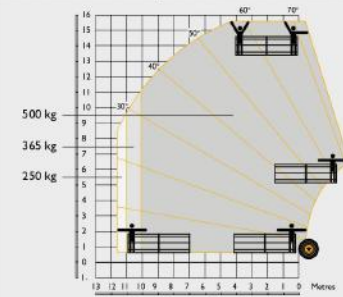
540-140 HiViz Stabilisers retracted Sway



540-140 HiViz Stabilisers extended Sway



540-140 HiViz Man platform Stabilisers extended

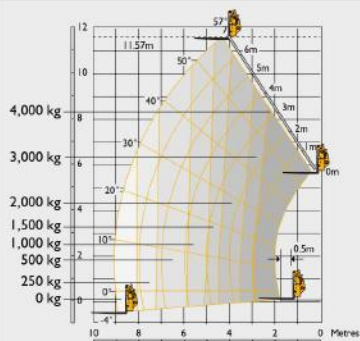


Maximum lift capacity	kg	4000	4000	Machine capacity	kg	4000
Lift capacity to full height	kg	1500	3000	Personnel work height	m	15.6
Lift capacity at full reach	kg	200	1250	Personnel work reach at maximum reach	m	11.75
Lift height	m	12.89	13.78	Platform rated capacity	kg	500
Reach at maximum lift height	m	3.09	1.01	Capacity at full reach	kg	365
Maximum forward reach	m	9.70	9.64	Maximum forward reach (slewed platform)	m	11.14
Reach with 1 tonne load	m	6.61	9.64	Capacity to full working height	kg	500
Placing height	m	12.40	13.30			

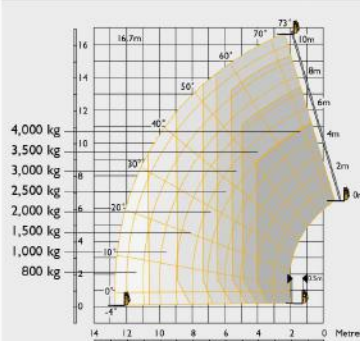
Complies with stability test EN 1459 Annex B. Chassis Levelling (Sway) with stabilisers retracted (Sway angle $\pm 9^\circ$).

LIFT PERFORMANCE

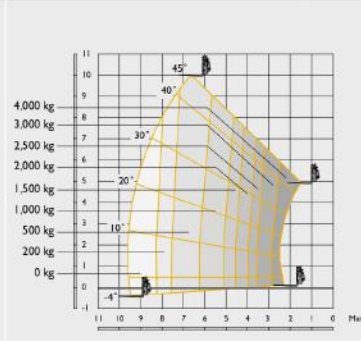
540-170 Stabilisers retracted Sway



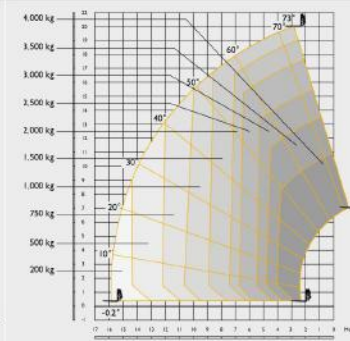
540-170 Stabilisers extended Sway



540-200 Stabilisers retracted Sway



540-200 Stabilisers extended Sway



Maximum lift capacity	kg	4000	4000	4000	4000
Lift capacity to full height	kg	1500	2500	500	1500
Lift capacity at full reach	kg	0	800	0	200
Lift height	m	11.57	16.7	10.27	20
Reach at maximum lift height	m	4.32	1.97	6.42	2.82
Maximum forward reach	m	9.04	12.50	9.63	15.9
Reach with 1 tonne load	m	5.76	11.70	6.25	10.65
Placing height	m	10.90	16.20	9.1	19.1

Complies with stability test EN 1459 Annex B. Chassis Levelling (Sway) with stabilisers retracted (Sway angle $\pm 9^\circ$).

ENGINE

JCB EcoMAX T4 Final, Capacity 4 cylinder 4.4ltrs, Aspiration turbocharged cooled

	531-70	541-70	535-95	533-105	535-125 HiViz	540-140 HiViz	540-170	540-200
Engine 55kW (75hp) @ 2200rpm, 400Nm torque at 1300rpm	Standard	Standard	Standard	Standard	Standard	Standard	Option	Standard
Engine 81kW (109hp) @ 2200rpm, 512Nm torque at 1300rpm	Option	Option	Option	Option	Option	Option	Standard	Option
Engine 93kW (125hp) @ 2200rpm, 550Nm torque at 1300rpm	Option	Option	Option	Option	Option	Option	Option	Option

HYDRAULIC CYCLE TIMES

	531-70	541-70	535-95	533-105	535-125 HiViz	540-140 HiViz	540-170	540-200
Boom raise s	7.2	8.8	9.1	8.8	10.4	13.5	22.7	17.3
Boom lower s	5.4	6.5	7.7	8.5	8.1	11	23.4	15.9
Extend s	6.8	6.8	10.5	13.2	15.7	15.6	18.3	28.1
Retract s	5	5	11.2	13.6	12.8	14.4	16.7	22.7
Bucket dump s	3.5	3.5	2.4	2.4	1.8	1.7	4.2	6.1
Bucket crowd s	2.9	2.9	3.5	3.4	2.3	2.0	4.6	5.9

HYDRAULICS

	Hydraulic System Pressure (bar)	Max. Pump flow (litres)
531-70	241	82
541-70	260	82
535-95	241	82
533-105	241	82
535-125	260	110
540-140	260	110
540-170	260	90+72
540-200	260	110

NOISE AND VIBRATION

	55kW	81kW	93kW	Uncertainty	Measurement conditions.
Noise at the operator station LpA	77	80	81	+/- 1 dB	Determined in accordance with the test method defined in EN12053.
Noise emission from the machine LWA	104	106	107	+/- 1 dB	Guaranteed equivalent sound power (external noise) determined in accordance with the dynamic test conditions defined in 2000/14/EC.
Whole body vibration m/s ²	0.37	0.37	0.37	0.18	ISO 2631-1:1997 normalised to an 8h reference period and based upon a test cycle defined in SAE J1166.
Hand-arm vibration m/s ²	<2.5	<2.5	<2.5	N/A	ISO 5349-2:2001 dynamic test conditions.

POINT LOADS

At maximum machine lift capacity (i.e. 4 tonne on a 540-170)

	531-70	541-70	535-95	533-105	535-125 HiViz	540-140 HiViz	540-170	540-200
Load per front wheel kg	4731	5616	5540	5565	6365	6880	7541	7723
Load per rear wheel kg	441	480	440	476	415	415	610	730
Load per stabiliser kg	N/A	N/A	N/A	4188	5151	6010	5824	5760
With no load on the forks and boom retracted in travel position								
Load per front wheel kg	1803	1847	1957	2312	2499	2484	2694	2992
Load per rear wheel kg	1819	2200	2273	2078	2530	3060	3457	3462

TRANSMISSION

Torque converter, 4 speed powershift gearbox.
Travel speed 531-70/541-70/535-95/533-105: 29kph, 33kph (when 2/4WD select is specified).
Travel speed 535-125/540-140/540-170: 29kph. Optional 33kph transmission.
Travel speed 540-200: 29kph.

BRAKING

Service brake: Servo-assisted, hydraulically oil-immersed multi-disc on front and rear axle.
Parking brake: Hand operated disc brake on output of gearbox. (93kW/125hp – oil immersed disc type).

CAB

Conforms to ROPS ISO 3471 and FOPS ISO 3449

OPTIONS

Front and rear working lights, rotating flashing beacon, fire extinguisher, traction and industrial tyres, electrical 2/4WD select, limited slip differential in front axle, windscreen and roof guard, air suspension seat, deluxe cab trim, roof and front screen blind, radio kit, air conditioning, reversing fan, deluxe trim, armrest (SLC only), roof moulding.

Single lever mechanical joystick, with push button extend and retract.

Single lever servo joystick option on 535-125 & 540-140.

Options of rear or rear & offside reversing cameras with the extra option to add pulse radar all with dash mounted screen.