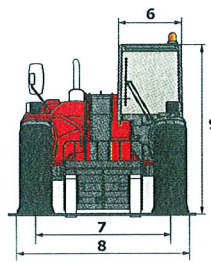
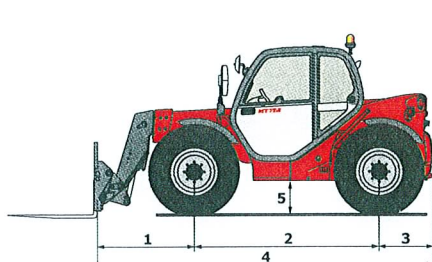
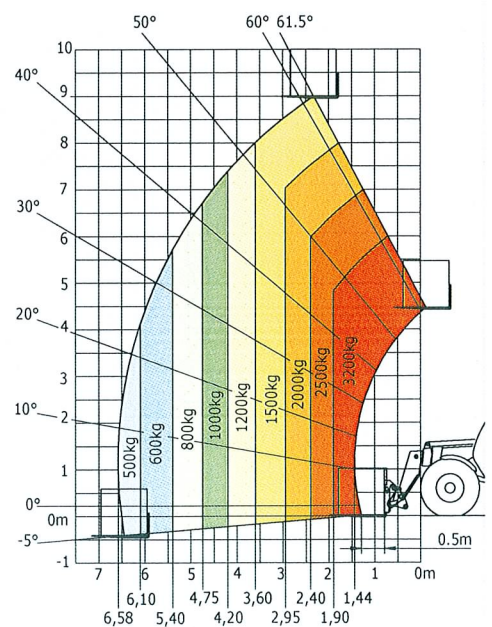
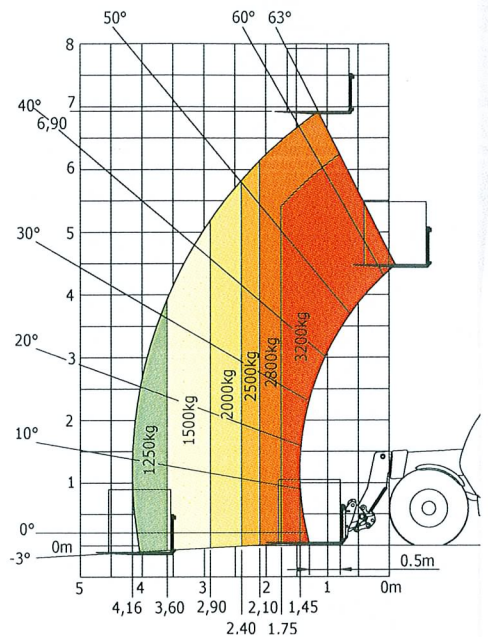


MT 732-932

	MT 732	MT 932
Lifting		
Max. capacity		3200 kg
Max. lifting height	6.90 m	9 m
Max. outreach	4.16 m	6.58 m
Break-out force with bucket		7400 daN
Time unladen		
Lifting	6.8	6.8
Lowering	5.8	5.8
Extension	6.8	12.4
Retraction	4.8	8.8
Crowd	3	3
Dump	2.9	2.9
Tyres	400/80-24	
Braking	oil immersed multi-disc braking on front/rear axles	
Service brake	oil immersed multi-disc mechanics on the front axle	
Parking brake	DEUTZ - STAGE 3B	
Engine	TCD 3.6 L	
Type	3621 cm ³	
Cubic capacity	101 HP/74,4 kW	
Power	410 Nm	
Max. torque	electronic	
Injection	water	
Cooling	8250 daN	
Laden drawbar pull	torque converter	
Transmission	electrohydraulic control	
Reversing shift	4/4	
Number of gears (forward/reverse)	25 km/h	
Max. travel speed (may vary according to applicable regulations)	4 wheel steer - 3 steering modes	
Steering mode	JSM® Joystick multi-function	
Controls	load limiter cut off system - EN15000 Norm	
Hydraulics	gear type with priority valve 104 l/min - 260 bar	
Pump	128 l	
Capacities	120 l	
Hydraulic oil	7400 kg	
Fuel	7825 kg	
Unladen weight (with forks)	1.44 m	
Dimensions	2.56 m	
1. Front wheel centre to carriage	0.76 m	
2. Wheelbase	4.72 m	
3. Rear wheel centre to rear face	0.45 m	
4. Overall length to carriage	0.86 m	
5. Ground clearance	1.85 m	
6. Overall width of cab	2.34 m	
7. Inside tyre width	2.30 m	
8. Overall width	1200 x 125 x 45 mm	
9. Overall height	3.67 m	
Standard forks (length x width x thickness)	12° / 114°	
Turning radius (over tyres)	78 dB	
Carriage rotation (crowd/dump)	106 dB	
Noise and vibration	<2.50 m/s ²	
Noise at driving position (LpA)	<2.50 m/s ²	
Environmental noise (LwA)		
Vibration to whole hand/arm		

Rough Terrain Load Chart standard EN1459 B

Machine on tyres with forks



This brochure describes versions and configuration options for MANITOU products which may be fitted with different equipment. The equipment described in this brochure may be standard, optional or not available depending on version. MANITOU reserves the right to change the specifications shown and described at any time and without prior warning. The manufacturer is not liable for the specifications given. For more information, contact your MANITOU dealer. Non-contractual document. Product descriptions may differ from actual products. List of specifications is not comprehensive. The logos and visual identity of the company are the property of MANITOU and may not be used without authorisation. All rights reserved. The photos and diagrams contained in this brochure are provided for information only.

MANITOU BF SA - Limited company with board of directors - Share capital: 39 547 824 euros - 857 802 508 RCS Nantes

