



**H.E. SERVICES (PLANT HIRE) LTD**  
**WORLD LEADERS IN DIGGER HIRE**

# POCKET GUIDE



**FLEET LIST, DEPOT DIRECTORY & INFORMATION PACK ALL IN ONE**



## NATIONAL HIRE HOTLINE

**NHC@HESERVICES.CO.UK | WWW.HESERVICES.CO.UK**

# 0208 804 2000

**H.E. SERVICES MAKE THE EARTH MOVE!**

# AN OVERVIEW OF H.E. SERVICES

From the inception in 1972, through the subsequent purchase of his first secondhand JCB 3C by Hugh Edeleanu, H.E. SERVICES has grown to become Europe's largest excavator hire company through commitment to people, quality and service.

Now with a fleet of over 3500 items of plant, the UK's most extensive range of attachments and a policy of machine replacement at between two and three years, H.E. SERVICES covers Britain via a network of strategically placed depots, as well as catering for long term contract hire throughout Europe.

Purchasing only the most advanced and productive machines available from manufacturers such as JCB, Komatsu, Manitou, Hydrema, Mecalec, Thwaites & Bomag, H.E. SERVICES ensures that its customers always have access to the latest technological advances in the industry. Fitting the latest Masterhitch bucket quick-hitch systems to all excavators over 2 tonnes further improves the productivity enjoyed by over 20,000 customers throughout the U.K.

H.E. SERVICES can provide hires for a duration of one day to over 25 years, to anywhere in the country from Land's End to John O'Groats, either with or without attachments and with or without operator. Security features are available including immobilisers and trackers. All machines are safety checked and will arrive on site with full documentation including delivery ticket, inspection sheet, hitch instructions, machine check sheets and certificates.

We have started to implement a new QR code system on some of our machines. Each machine will have a unique sticker which can be scanned from any smart device, this will then allow you to view all details and documentation needed for that dedicated machine.



# AN OVERVIEW OF H.E. SERVICES

Maintenance and servicing are entrusted to a division that boasts a team of highly trained technicians. Equipped with the latest telecommunications technology, tools and equipment for almost any eventuality, they offer immediate response in fully appointed vehicles specially developed for the purpose.

To appeal to the widest possible market, H.E. SERVICES offers all of its plant either on self drive hire or with an experienced qualified operator.

With an in house fleet of delivery vehicles, nothing is left to chance, ensuring a prompt service at all times. No reliance on third parties means total control of Customer Service.

Constantly searching for ways to improve and widen market penetration and give customers an even better service, H.E. SERVICES is continually using training and technology to improve its market leadership position and to advance it through the 21st Century.

Now, more than 50 years after Hugh Edeleanu formed H.E. SERVICES, he is still as eager as ever for feedback from customers, suppliers and his staff. Communication is always welcome either by letter, fax, e-mail or telephone, which Hugh guarantees will always receive his personal attention.



**HUGH EDELEANU** TD. MA. BSc. (Cantab)  
Chairman  
H.E. SERVICES Group of Companies  
Email: [chairman@heservices.co.uk](mailto:chairman@heservices.co.uk)

## Locations & Contacts

Depot Location Map	5
The National Hire Centre	6
National Out Of Hours Helpline	6
Head Office & Accounts	7
Strood Depot	8
Ashford Depot	9
Hungerford Depot	10
Exeter Depot	11
Cardiff Depot	12
West Midlands Depot	13
Liverpool Depot	14
Durham Depot	15
Cambridge Depot	16
East Midlands Depot	17
Transport Services	18-20
Service Engineers	21

## Machine Specifications

Mini Excavators	22
Midi Excavators	23
Large Excavators	24-26
Long Reach Excavators	27-28
Backhoe Loaders	29
Site Dumpers	30-31
Articulated Dump Trucks	32
Tracked Dumper	33
Rollers	34-35
Telehandlers	36-46
Tractor	47
Wood Chipper (Tracked)	48



## Information

Excavator Digging Depth Chart	49-50
Excavator Ground Reach Chart	51-52
Petrochemical Contracts, Height and Slew Restriction & Safety Lift Systems	53
Digging Grabs	54
Excavator Attachments	55-60
Plant Accessories	61-62
Telehandler Attachments	63-64
Excavators Used As Cranes & Cab, Canopy or Frame Removal	65
Operator Competence, Site Safety & Security	66
Environment Policy/Quality Policy	67
What Are The Benefits?	68
When You Calculate Costs...?	69
Service Quality & Value For Money	70
Precis of Terms & Conditions	71
Weights & Measures	72
Notes	73-74



# DEPOT LOCATION MAP



**H.E. SERVICES (PLANT HIRE) LTD**  
**WORLD LEADERS IN DIGGER HIRE**



## Depot Hours of Business

Monday - Friday 8am - 6pm    Saturday 8am - 12noon  
Sundays & Bank Holidays - Closed

## Head Office Hours of Business

Monday - Friday 8am - 6pm  
Saturdays, Sundays & Bank Holidays - Closed

## National Hire Hotline

# 0208 804 2000

All hires are subject to H.E. SERVICES Terms and Conditions of hire, which are available on request and on our website:  
[www.heservices.co.uk](http://www.heservices.co.uk)

## National Hire Hotline:

# 0208 804 2000



This Department is dedicated to providing a central enquiry and order point for all hires Nationwide. The National Hire Centre can view on-line availability of all machines and drivers in all depots, providing a fast and efficient central enquiry and order point for all customers.

**Open 8:00am to 6:00pm  
Monday to Friday**

**8:00am to 12:00pm  
Saturday**

## National Out of Hours Helpline

To ensure that customers enjoy service at any time and particularly in an emergency, H.E. SERVICES operates a 24 hour emergency service, manned outside depot hours of business by Senior Management every day of the year.

# 0208 804 2000

**One phone number: 24/7 service.**

# HEAD OFFICE & ACCOUNTS

Address	Whitewall Road, Strood Kent, ME2 4DZ
Telephone	0208 804 2000
Fax	01634295355
Web	<a href="http://www.heservices.co.uk">www.heservices.co.uk</a>
E-mail	<a href="mailto:nhc@heservices.co.uk">nhc@heservices.co.uk</a>
Hugh Edeleanu	Chairman
Clare Luscombe	Financial Director
Peter Durey	Managing Director
Pam Durey	Sales & Marketing Director
Jon Larcom	Area Director - Northern

## Customer Services & Invoice Queries

For questions regarding how or when payment should be made, or for copy invoices, please call Credit Control.

If there is a query regarding any item incorrectly charged on an invoice, please also call credit control or fax or e-mail us full details, including invoice number.

## Credit Limits, Name Changes and New Accounts

Should you wish to review your credit limit, advise us of the change of any details such as a new address or phone number, or should you require a new account, please contact our new accounts department.

For non-account customers, we accept payment via the following cards:



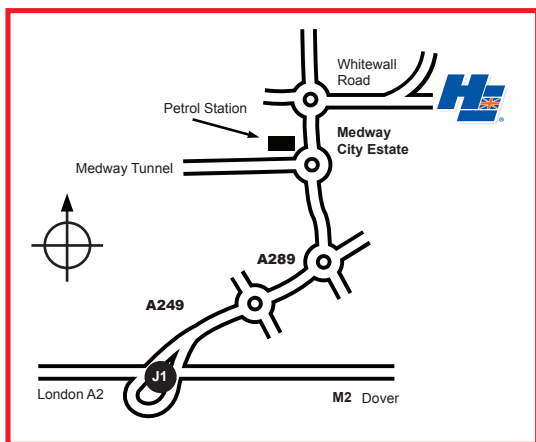
All e-mail addresses = firstname.surname@heservices.co.uk

## WHERE TO FIND US:

Whitewall Road, Strood  
Kent, ME2 4DZ

☎ 0208 804 2000

✉ [strood@heservices.co.uk](mailto:strood@heservices.co.uk)



Situated on the Medway City Estate at Strood, with easy access to the M2/A2 and onward to the M25 and M20, Strood Depot supplies an area consisting of West Kent, Surrey, London and parts of West Sussex and Essex.



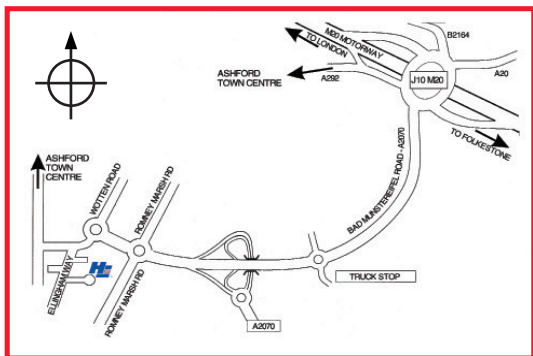
# ASHFORD DEPOT

## 📍 WHERE TO FIND US:

Ellingham Industrial Estate, Ashford,  
Kent, TN23 6LZ

☎ 01233 639831

✉ ashford@heservices.co.uk



Located just off the A2070 Ashford Eastern Bypass, with fast access to Junction 10 of the M20, Ashford Depot is ideally situated to serve the East of Kent and East Sussex.



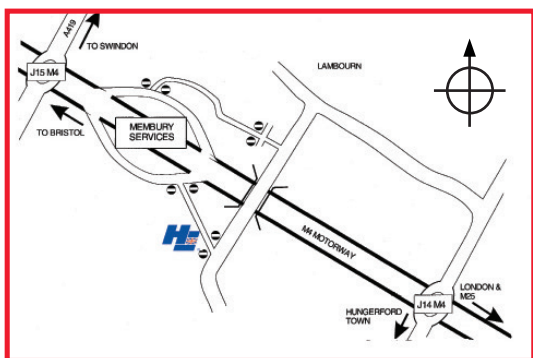
# HUNGERFORD DEPOT

## WHERE TO FIND US:

Lambourn Woodlands, Hungerford,  
Berks, RG17 7TJ

 01488 73444

 [hungerford@heservices.co.uk](mailto:hungerford@heservices.co.uk)



Located adjacent to the Membury Services on the M4, Westbound, Hungerford Depot offers easy access to the M4 corridor, The Thames Valley and beyond.



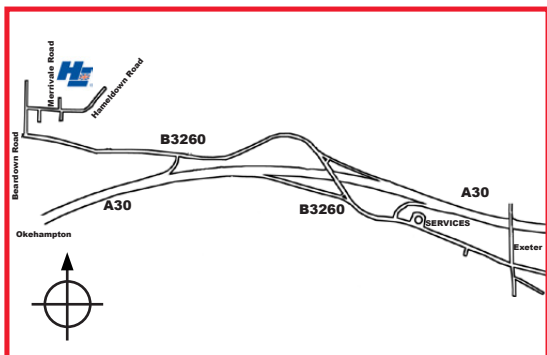


## WHERE TO FIND US:

Merrivale Road, Okehampton,  
Devon, EX20 1UD

 01395 239375

 [exeter@heservices.co.uk](mailto:exeter@heservices.co.uk)



Take the B3260 exit off the A30 toward Okehampton, follow the B3260 and turn right onto Beardown Rd. Take the 1st right onto Hameldown Road.



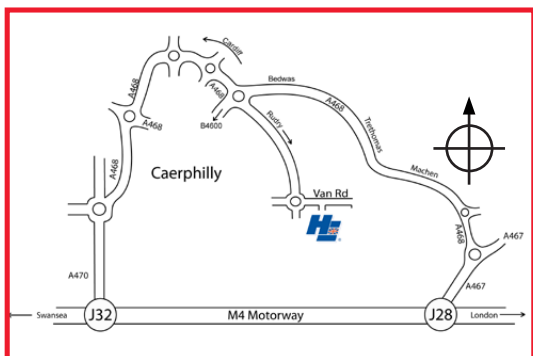
# CARDIFF DEPOT

## WHERE TO FIND US:

Van Road, Caerphilly, Mid Glamorgan,  
Cardiff, CF83 3EL

☎ 02920 850086

✉ [cardiff@heservices.co.uk](mailto:cardiff@heservices.co.uk)



Situated near Junction 32 of the M4, Cardiff Depot is ideally situated and easily accessible to provide a 1st Class service for the whole of Wales and the Bristol area.

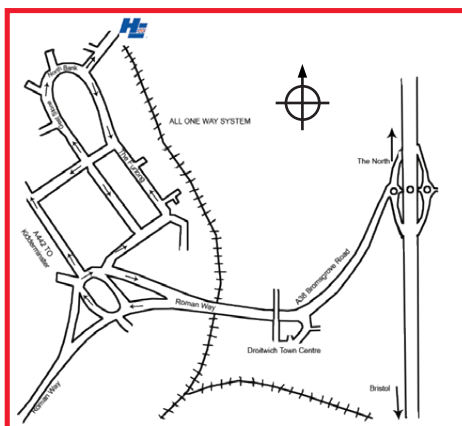


## WHERE TO FIND US:

Unit 17 Northbank  
Berry Hill Industrial Estate, Droitwich,  
Worcestershire WR9 9AU

 01905 774466

 [westmidlands@heservices.co.uk](mailto:westmidlands@heservices.co.uk)



Situated just 2 miles from Junction 5 of the M5, West Midlands Depot enjoys enviable access to Birmingham, The Black Country and the West Midlands.

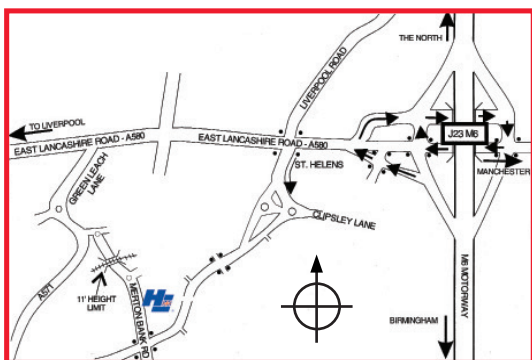


## 📍 WHERE TO FIND US:

Merton Bank Road, St. Helens,  
Lancashire WA9 1HY

☎ 01744 453466

✉ [liverpool@heservices.co.uk](mailto:liverpool@heservices.co.uk)



Situated a short distance from the main East Lancashire Road and near the centre of St. Helens, Liverpool Depot offers fast access to Merseyside, Manchester and via the M6 to surrounding areas.

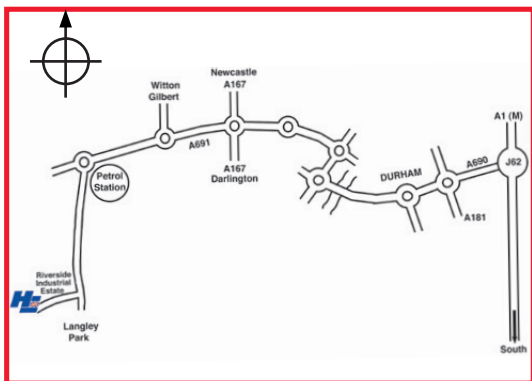


## WHERE TO FIND US:

Riverside Industrial Estate  
Langley Park, Co. Durham, DH7  
9TT

☎ 0191 373 3883

✉ [durham@heservices.co.uk](mailto:durham@heservices.co.uk)



Located about four miles west of Durham City, and five miles from Junction 62 of the A1(M), Durham Depot is ideally situated to offer prompt access to Co. Durham, Tyneside, Wearside and Teeside. The Depot is co-located with Diggerland, Durham.



\*Calls to 08 numbers cost 10p per minute, plus your phone company's access charge

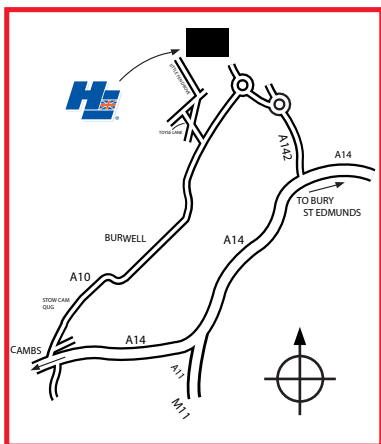
\*\*Calls to 09 numbers cost 55p per minute, plus your phone company's access charge

## 📍 WHERE TO FIND US:

Factory Road, Burwell, Cambridgeshire  
CB25 0BN

☎ 01223 855332

✉ [cambridge@heservices.co.uk](mailto:cambridge@heservices.co.uk)



Situated a short distance from the B1102 near Burwell. Cambridge depot is well placed to provide plant throughout Cambridgeshire and East Anglia.



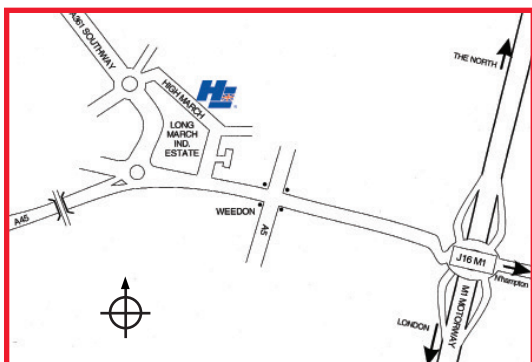
# EAST MIDLANDS DEPOT

## WHERE TO FIND US:

46 High March, Daventry,  
Northants,  
NN11 4HB

 01327 301111

 [eastmidlands@heservices.co.uk](mailto:eastmidlands@heservices.co.uk)



Located on the edge of Daventry,  
East Midlands Depot enjoys easy access to the  
M1 and Northampton.





# TRANSPORT SERVICES

“Service is the reason for our existence”, and to ensure that H.E. SERVICES remains at the forefront of providing the highest quality service to customers, we do not normally entrust the important task of delivery to anyone but our trained and well equipped delivery drivers.

By operating a fleet of purpose designed delivery vehicles, H.E. SERVICES maintains control, and can guarantee our customers a delivery service that regularly exceeds their expectations.

Experience over the years has shown that relying on a third party for deliveries, often would not allow us to meet our service promise to our customers.

Vehicles are chosen specifically for their durability and reliability, and bodies are developed with manufacturers to meet the rigorous standards we expect of delivery vehicles.

Choosing LGV drivers that are also experienced plant operators ensures a greater understanding of the requirements and expectations of our customers.



If you need your own plant moved, don't forget that we also extend our Plant Transport Service to all of our customers.

Wherever the destination and whatever the size of the machine, H.E. SERVICES are able to provide you with the most highly professional and efficient Transport Service available.

All our vehicles are available for short or long term hire, complete with our own experienced drivers.

Your local H.E. SERVICES depot can offer a very competitive tailored quote to suit your transport requirements.

# TRANSPORT SERVICES

## HIAB LORRIES

### Specifications

#### 32 Ton HIAB Lorry with Crane

Bed Length:	25	ft
Max Lifting Capacity:	12,000	KG
Lifting Capacity on Full Reach:	3,500	KG



HIAB Lorry is **only** available to hire from our Cardiff Depot

## RIGID LORRIES

### Specifications



18 Ton Rigid Lorry

36 Ton Rigid Lorry



# TRANSPORT SERVICES

## LOW LOADERS

### Specifications



44 Ton Low Loader



65 Ton Low Loader



80 Ton Low Loader

# SERVICE ENGINEERS

Plant reliability is directly proportional to the care a hire company takes with servicing and with repairs.

In a market place where competitors are increasingly reliant on the philosophy of “repair it only when it goes wrong”, H.E. SERVICES' customers can take comfort that this will never happen with the machines and equipment that is hired from us.

We fully recognise the importance of regular servicing to manufacturers' recommendations, and insist on this for all plant that we operate. Customers are always the biggest loser when scheduled maintenance is not carried out, as they suffer the resultant increases in breakdowns.

H.E. SERVICES employs skilled mobile plant mechanics, who have comprehensively equipped mobile workshops and the latest telecommunication equipment at their disposal, guaranteeing a quality of customer support in dealing with all service requests quickly and efficiently that is much envied, often copied, but never equalled.



### 1.5 Ton Komatsu PC14 MR-3 Canopy, Rubber Tracks

Weight:	1,460 KG
Height:	2.410 Metres
Width - (Tracks Retracted): 980MM (Tracks Extended):	1.300 mm
Length (Transport Position):	3.4 Metres
Maximum Dig Depth:	2.25 Metres
Maximum Dig Height:	3.43 Metres
Maximum Reach (Ground Level):	3.785 Metres
Maximum Dump Height:	2.440 Metres
Fuel Tank Capacity:	19 LTS
Track Width:	230 mm
Dozer Blade Fitted:	Yes
Option of Trailer Hire:	Yes



Komatsu PC14



Komatsu PC26

### 3 Ton Komatsu PC26 MR-3 Cabbed, Rubber Tracks

Weight:	2,800 KG
Height:	2.497 Metres
Width:	1.500 Metres
Length (Transport Position):	4.060 Metres
Maximum Dig Depth:	2.720 Metres
Maximum Dig Height:	4.340 Metres
Maximum Reach (Ground Level):	4.530 Metres
Maximum Dump Height:	3.120 Metres
Dozer Blade Fitted:	Yes
Fuel Tank Capacity:	28 LTS
Track Width:	300 mm
Option of Trailer Hire:	Yes

# MIDI EXCAVATORS

## Specifications

### 5 Ton Komatsu PC55 MR-5 Cabbed, Road Liner Tracks

Weight:	5,350 KG
Height:	2.590 Metres
Width:	1.960 Metres
Length (Transport Position):	5.615 mm
Maximum Dig Depth:	4.130 Metres
Maximum Dig Height:	6.180 Metres
Maximum Reach (Ground Level):	6.435 Metres
Maximum Dump Height:	4.470 Metres
Dozer Blade Fitted:	Yes
Fuel Tank Capacity:	65 LTS
Track Width:	400 mm



Komatsu PC55



Komatsu PC80

### 8 Ton Komatsu PC 80 MR-5 Cabbed, Road Liner Tracks

Weight:	8,000 KG
Height:	2.710 Metres
Width:	2.250 Metres
Length (Transport Position):	6.060 Metres
Maximum Dig Depth:	4.325 Metres
Maximum Dig Height:	6.560 Metres
Maximum Reach (Ground Level):	6.945 Metres
Maximum Dump Height:	4.620 Metres
Dozer Blade Fitted:	Yes
Fuel Tank Capacity:	110 LTS
Track Width:	450 mm

# LARGE EXCAVATORS

All fitted with Hose Burst Check Valves, rear view cameras  
& Audible Overload Warning Device for lifting purposes

## 14 Ton Komatsu PC 138-11

Weight:	15,000 KG
Height:	2.815 Metres
Width:	2.690 Metres
Length (Transport Position):	7.160 Metres
Maximum Dig Depth:	5.900 Metres
Maximum Dig Height:	9.700 Metres
Maximum Reach (Ground Level):	8.600 Metres
Maximum Dump Height:	9.700 Metres
Dozer Blade Fitted:	Optional
Fuel Tank Capacity:	200 LTS
Track Width- (Rubber Tracked) :	500 mm
(Steel Tracked) :	700 mm



Komatsu PC138



Komatsu PC210

## 22 Ton Komatsu PC 210-11

Weight:	22,260 KG
Height With Cab:	3.035 Metres
Width:	3.08 Metres
Length (Transport Position):	9.485 Metres
Maximum Dig Depth:	6.62 Metres
Maximum Dig Height:	10.0 Metres
Maximum Reach (Ground Level):	9.70 Metres
Maximum Dump Height:	7.110 Metres
Track Width- (Rubber Tracked):	600 mm
(Steel Tracked) :	700 mm
Fuel Tank Capacity:	400 LTS



# LARGE EXCAVATORS

All fitted with Hose Burst Check Valves, rear view cameras  
& Audible Overload Warning Device for lifting purposes

(Zero Tailswing Machine)

## 22 Ton Komatsu Komatsu PC 228USLC-11

Weight:	23,460 KG
Height:	3.255 Metres
Width:	2.980 Metres
Length (Transport Position):	8.920 Metres
Maximum Dig Depth:	6.620 Metres
Maximum Dig Height:	10.700 Metres
Maximum Reach (Ground Level):	9.700 Metres
Maximum Dump Height:	7.825 Metres
Track Width- (Rubber Tracked) 600 mm: (Steel Tracked):	700 mm
Fuel Tank Capacity:	320 LTS



Komatsu PC228



Komatsu PC360

## 36 Ton Komatsu PC 360-10

Weight:	36,360 KG
Height:	3.16 Metres
Width:	3.39 Metres
Length (Transport Position):	11.14 Metres
Maximum Dig Depth:	7.38 Metres
Maximum Dig Height:	10.21 Metres
Maximum Reach (Ground Level):	10.92 Metres
Maximum Dump Height:	7.11 Metres
Notifiable Load of Transport:	Yes
Fuel Tank Capacity:	605 LTS
Track Width:	800 mm

## LARGE EXCAVATORS

All fitted with Hose Burst Check Valves, rear view cameras  
& Audible Overload Warning Device for lifting purposes

### 49 Ton Komatsu PC 490LC -10

Weight:	47,910 KG
Height with Cab:	3.36 Metres
Width:	3.69 Metres
Length (Transport Position):	12.04 Metres
Maximum Dig Depth:	7.28 Metres
Maximum Dig Height:	10.35 Metres
Maximum Reach (Ground Level):	11.215 Metres
Maximum Dump Height:	7.145 Metres
Notifiable Load of Transport:	Yes
Fuel Tank Capacity:	650 LTS
Track Width:	800 mm



# LONG REACH EXCAVATORS

All fitted with Hose Burst Check Valves, rear view cameras  
& Audible Overload Warning Device for lifting purposes

## SR12- Komatsu PC 138-10

Weight:	16,000 KG
Transport Height:	2.810 Metres
Width:	2.660 Metres
Minimum Tail Swing Radius:	2.110 Metres
Maximum Dig Depth:	9.410 Metres
Maximum Cut Height:	11.05 Metres
Maximum Reach (From Machine Centre):	12.30 Metres
Masterhitch System Fitted:	Yes - MH8
Track Width:	700 mm
Notifiable Load for Transport:	No
Fuel Tank Capacity:	247 LTS



Komatsu PC138

Komatsu PC210

## SR15 Komatsu PC 210

Weight:	26,000 KG
Transport Height:	3.100 Metres
Width:	3.080 Metres
Minimum Tail Swing Radius:	3.990 Metres
Maximum Dig Depth:	11.51 Metres
Maximum Cut Height:	12.000 Metres
Maximum Reach (From Machine Centre):	15.06 Metres
Masterhitch System Fitted:	Yes MH15
Fuel Tank Capacity:	400 LTS
Notifiable Load for Transport:	Yes
Track Width:	700 mm

# LONG REACH EXCAVATORS

All fitted with Hose Burst Check Valves, rear view cameras  
& Audible Overload Warning Device for lifting purposes

## SR22 Komatsu PC 360 -10

Weight:	45,000 KG
Transport Height:	3.470 Metres
Width:	3.390 Metres
Minimum Tail Swing Radius:	3.770 Metres
Maximum Dig Depth:	17.480 Metres
Maximum Cut Height:	13.000 Metres
Maximum Reach (From Machine Centre):	21.920 Metres
Masterhitch System Fitted:	Yes MH15
Fuel Tank Capacity:	605 LTS
Notifiable Load for Transport:	Yes
Track Width:	800 mm



Komatsu PC360



# BACKHOE LOADERS

## Specifications

### JCB 3CX Turbo High Speed Contractor

Weight:	8.5	Tonnes
Height (inc. Flashing Light, Backactor Lowered):	3.12	Metres
Height (Backactor in Travel Position):	3.61	Metres
Width:	2.35	Metres
Length (Transport Position):	5.62	Metres
Maximum Dig Depth (Back Arm Extended):	5.46	Metres
Maximum Dig Height (Back Arm):	6.35	Metres
Max Dump Height (Extended Back Arm):	4.720	Metres
Smooth Ride System:	Yes	
Piped for Breakers & Attachment:	Yes	
Front Bucket Maximum Load over Height:	3.2	Meters
Safe Working Load (Back Arm Extended):	718	Kg
Safe Working Load (Back Arm Retracted):	1000	Kg
Max Lift Capacity (Front Bucket):	2850	Kg
Forklift Safe Working Load:	1000	Kg
Masterhitch Systems Fitted (Back Arm):	Yes	
Max Reach (Ground Level - Back Arm):	6.52	Metres
Fuel Tank Capacity:	160	LTS



### 1 Ton Dumper Mecalac

Unladen Weight:	1340 Kg
Height to Top of ROPS:	2837 mm
Height to Front Lip of Skip (untipped):	1620mm
Width:	984* / 1110mm
Length:	2980 mm
Heaped Capacity:	0.5m <sup>3</sup>
Skip Capacity – Water:	320 L
Road Speed (Max):	7Mph/11Km/h
Road Legal:	Optional



**1 Ton Dumper**



**3 Ton Swivel Dumper**

### 3 Ton Swivel

Unladen Weight:	2360 Kg
Height to Top of ROPS:	2920 mm
Height to Front Lip of Skip (untipped):	853 mm
Width:	1846 mm
Length:	3952 mm
Heaped Capacity:	1.9m <sup>3</sup>
Skip Capacity – Water:	1000 L
Road Speed (Max):	11.8Mph/19Km/h
Road Legal:	Optional

# SITE DUMPERS

## Specifications

6 Ton Swivel	
Unladen Weight:	4500 Kg
Height to Top of ROPS:	3306 mm
Height to Front Lip of Skip (untipped):	1258 mm
Width:	2207 mm
Length:	4539 mm
Heaped Capacity:	3.5m <sup>3</sup>
Skip Capacity – Water:	1850 L
Road Speed (Max):	16.3Mph/26.2Km/h
Road Legal:	Optional

6 Ton Swivel Dumper



9 Ton Dumper

9 Ton Dumper	
Unladen Weight:	5260 Kg
Height to Top of ROPS:	3668 mm
Height to Front Lip of Skip (untipped):	1215 mm
Width:	2380 mm
Length:	4666 mm
Heaped Capacity:	4.2m <sup>3</sup>
Skip Capacity – Water:	1910 L
Road Speed (Max):	15.4Mph/24.83Km/h
Road Legal:	Optional



# ARTICULATED DUMP TRUCKS

## Specifications

(Fitted with Flotation Tyres for low ground pressure)

### 10 Ton Hydrema 912

Unladen Weight:	6.960 KG
Carrying Capacity:	10.0 Tonnes
Volume of Skip (Heaped):	5.60 M <sup>3</sup>
Overall Height:	2.750 Metres
Width:	2.470 Metres
Length:	5.800 Metres
Rear View Camera:	Yes
Road Speed (Max):	25Mph/40Kmh
Notifiable For Transport:	No
Fitted with Flotation Tyres:	Yes
Tyre Size:	600/55 x 26.5
Road Legal:	Optional



The Hydrema is ideal for Golf Courses where low ground pressure is required. Very good in soft ground conditions.



# TRACKED DUMPER

## Specifications

### 3 Ton Yanmar C30R

Unladen Weight:	2.365 Ton
Height Top Of Rops Frame:	2.5 Meters
Height Without Rops Frame- Folds Down:	2.255 Metres
Width:	1.655 Metres
Length:	3.2 Metres
Capacity Of Skip:	3.2 Ton
Dump Vessel Capacity – Heaped:	1.24 M <sup>3</sup>
Road Speed- MAX:	5Mph/8.2Km/h
Road Legal:	Optional



3 Ton Tracked Dumper



3 Ton Tracked Dumper

### 3 Ton Swivel Tracked Dumper Yanmar C30R-3TV

Unladen Weight:	2.865 Ton
Height Top Of Rops Frame:	2.5 Meters
Height Without Rops Frame- Folds Down:	2.310 Metres
Width:	1.550 Metres
Length:	3.640 Metres
Capacity Of Skip:	2.5 Ton
Dump Vessel Capacity – Heaped:	1.24 M <sup>3</sup>
Road Speed- MAX:	5Mph/8.2Km/h
Road Legal:	Optional

### 800mm Bomag BW80 AD-5

Weight:	1550 KG
Length- Transport Position:	2,194 Metres
Width:	800 mm
Fuel Tank Capacity:	30 LTS
Height With ROPS- Up:	2,304 Metres
Height With ROPS- Folded:	1,627 Metres
Frequency:	42/63 Hz
Drum Diameter:	580 mm
Spray Bars:	Yes



800mm Roller

1200mm Roller



### 1200mm Bomag BW120 AD-5

Weight:	2700 KG
Length- Transport Position:	2,529 Metres
Width:	1,200 mm
Fuel Tank Capacity:	35 LTS
Height With ROPS- Up:	2,568 Metres
Height With ROPS- Folded:	1,808 Metres
Frequency:	63/67 Hz
Drum Diameter:	700 mm
Spray Bars:	Yes

### 1350mm Bomag BW135 AD-5

Weight:	4,000 KG
Length- Transport Position:	2,840 Metres
Width:	1,300 mm
Fuel Tank Capacity:	55 LTS
Height With ROPS- Up:	2,703 Metres
Height With ROPS- Folded:	1,895 Metres
Frequency:	50/56 Hz
Drum Diameter:	900 mm
Spray Bars:	Yes

1350mm Roller



Trench Roller



### Bomag Trench Roller BMP-8500

Weight:	1.585 KG
Width (With Extensions):	610- 850 mm
Length- Transport Position:	1,897 mm
Fuel Tank Capacity:	24 LTS
Fuel:	Diesel
Height:	1,275 Metres
Frequency:	42/42 Hz
Drum Diameter:	420 mm

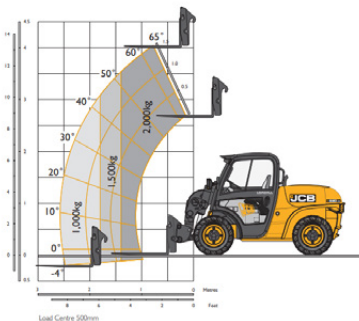
### (No Stabilisers)

### 4 Metre JCB 520-40

Weight:	4,400 KG
Overall Height:	1.970 Metres
Width Over Tyres:	1.560 Metres
Length To Front Of Carriage:	3.380 Metres
Maximum Lift Height:	4 Metres
Maximum Capacity At Max Lift Height:	2,000 KG
Maximum Capacity At Full Reach:	1,000 KG
Maximum Forward Reach:	2,590 Metres



4m JCB Telehandler



All Telehandlers are available with a range of special attachments such as:  
**FORKS | BUCKET | GRAIN BUCKET | DUNG FORKS | TIPPING SKIP |  
 BLOCK GRAB | 4-in-1 BUCKET | LIFTING HOOK etc.**

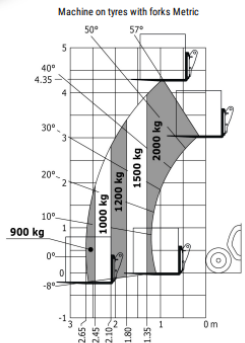
(No Stabilisers)

### 4 Metre Manitou MT420H

Weight:	4.190 KG
Height With Cab:	1.97 Metres
Width:	1.49 Metres
Length- Transport Position:	3.64 Metres
Maximum Lift Height:	4.35 Metres
Maximum Capacity At Max Lift Height:	2,000 KG
Max Forward Reach:	2.65 Metres
Reach At Max Height:	1.8 Metres
High Capacity Grain Bucket:	2 M3
Sway Control:	No
Road Speed:	24.9 KM/PH



4m Manitou Telehandler



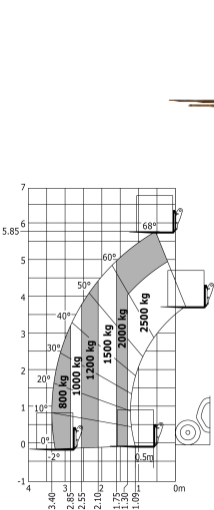
All Telehandlers are available with a range of special attachments such as:  
**FORKS | BUCKET | GRAIN BUCKET | DUNG FORKS | TIPPING SKIP |**  
**BLOCK GRAB | 4-in-1 BUCKET | LIFTING HOOK etc.**

# TELEHANDLERS

## Specifications

(No Stabilisers)	6M Telescopic Handler Manitou MT625
Weight:	4,710 KG
Height with Cab (& Flashing Light):	1.92 Metres
Width:	1.81 Metres
Length (Transportation Position):	3.9 Metres
Maximum Lift Height:	5.850 Metres
Maximum Capacity:	2.500 KG
Capacity at Max Lift Height:	2.500 KG
Maximum Forward Reach:	3.4 Metres
Max Forward Reach with 1 Tonne Load:	2.85 Metres
Reach at Maximum Height:	1 Metres
Road Speed:	24.9 KM/PH
High Capacity Grain Bucket:	2 M <sup>3</sup>
Stabilisers:	No

6m Manitou Telehandler



Ideal for Low Head room applications like Underground Car Parks or inside Buildings. These machines also have a tight turning circle and features highly responsive lever controls for precise movements.

All Telehandlers are available with a range of special attachments such as:  
**FORKS | BUCKET | GRAIN BUCKET | DUNG FORKS | TIPPING SKIP |  
BLOCK GRAB | 4-in-1 BUCKET | LIFTING HOOK etc.**

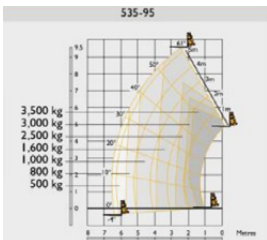
(No Stabilisers)

9 Metre JCB 535-95

Weight:	8,215 KG
Overall Height:	2.49 Metres
Overall Width With Stabilisers:	N0
Length To Front Of Carriage:	4.99 Metres
Maximum Lift Height:	9.50 Metres
Maximum Capacity At Max Lift Height:	3,500 KG
Maximum Forward Reach:	6.52 Metres



9m JCB Telehandler



All Telehandlers are available with a range of special attachments such as:  
**FORKS | BUCKET | GRAIN BUCKET | DUNG FORKS | TIPPING SKIP |  
 BLOCK GRAB | 4-in-1 BUCKET | LIFTING HOOK etc.**



# TELEHANDLERS

## Specifications

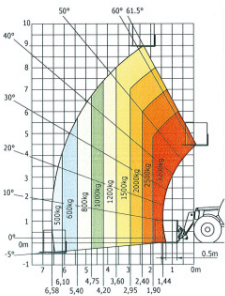
(No Stabilisers)

### 9M Telescopic Handler Manitou MT932

Weight:	7,820 KG
Height with Cab (& Flashing Light):	2.550 Metres
Width:	2.261 Metres
Length (Transportation Position):	5.916 Metres
Maximum Lift Height:	9.000 Metres
Maximum Capacity:	3,200 KG
Capacity at Max Lift Height:	3,200 KG
Maximum Forward Reach:	5.580 Metres
Max Forward Reach with 1 Tonne Load:	4.750 Metres
Reach at Maximum Height:	2.350 Metres
Stabilisers:	No
High Capacity Grain Bucket:	2 M <sup>3</sup>



9m Manitou Telehandler



MT 932

All Telehandlers are available with a range of special attachments such as:  
**FORKS | BUCKET | GRAIN BUCKET | DUNG FORKS | TIPPING SKIP |  
BLOCK GRAB | 4-in-1 BUCKET | LIFTING HOOK etc.**

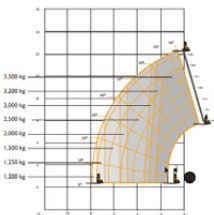
### (With Stabilisers)

### 13 Metre JCB 535-125

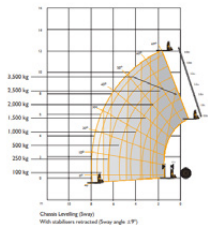
Weight:	9,140 KG
Overall Height:	2.59 Metres
Overall width with stabilisers fully deployed:	2.35 Metres
Overall length to front of carriage:	5.84 Metres
Max lift height with stabilisers:	12.3 Metres
Max capacity at max lift height with stabilisers:	3,500 KG
Max capacity at full reach with stabilisers:	1,200 KG
Max forward reach with stabilisers:	8 Metres



LIFT PERFORMANCE – STABILISERS EXTENDED



LIFT PERFORMANCE – STABILISERS RETRACTED



All Telehandlers are available with a range of special attachments such as:  
**FORKS | BUCKET | GRAIN BUCKET | DUNG FORKS | TIPPING SKIP |  
 BLOCK GRAB | 4-in-1 BUCKET | LIFTING HOOK etc.**

# TELEHANDLERS

## Specifications

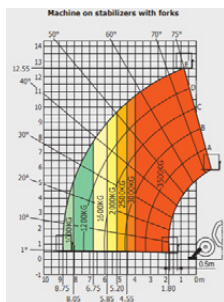
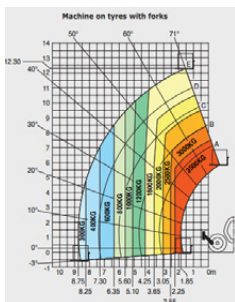
(With Stabilisers)

### 13 Metre Telescopic Handler Manitou MT1335

Weight:	8,900 KG
Height with Cab (& Flashing Light):	2.420 Metres
Width:	2.280 Metres
Length (Transportation Position):	5.860 Metres
Maximum Lift Height:	12.55 Metres
Maximum Capacity:	3,500 KG
Capacity at Max Lift Height:	3,500 KG
Maximum Forward Reach:	8.750 Metres
Max Forward Reach with 1 Tonne Load:	8.750 Metres
Reach at Maximum Height:	1.850 Metres
Stabilisers:	Yes
High Capacity Grain Bucket:	2 M <sup>3</sup>



13m Manitou Telehandler



All Telehandlers are available with a range of special attachments such as:  
**FORKS | BUCKET | GRAIN BUCKET | DUNG FORKS | TIPPING SKIP |  
 BLOCK GRAB | 4-in-1 BUCKET | LIFTING HOOK etc.**

(With Stabilisers)

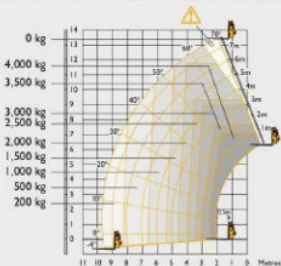
14 Metre JCB 540-140

Weight:	10,880 KG
Overall Height:	2.59 Metres
Overall Width With Stabilisers:	2.57 Metres
Overall Length To Front Of Carriage:	6.23 Metres
Maximum Lift Height With Stabilisers:	13.78 Metres
Maximum Capacity At Max Lift Height With Stabilisers :	4,000 KG
Maximum Forward Reach With Stabilisers:	9.64 Metres

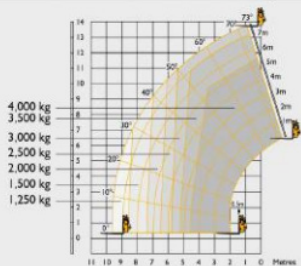


14m JCB Telehandler

540-140 HiViz Stabilisers retracted Sway



540-140 HiViz Stabilisers extended Sway



All Telehandlers are available with a range of special attachments such as:  
**FORKS | BUCKET | GRAIN BUCKET | DUNG FORKS | TIPPING SKIP |**  
**BLOCK GRAB | 4-in-1 BUCKET | LIFTING HOOK etc.**

# TELEHANDLERS

## Specifications

(With Stabilisers)

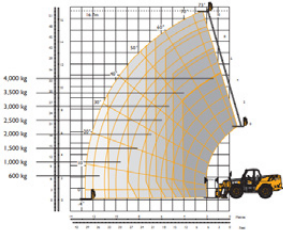
17 Metre JCB 540-170

Weight:	12,060 KG
Overall Height:	2.69 Metres
Overall Width With Stabilisers Fully Deployed:	3.55 Metres
Overall Length to Front of Carriage:	6.36 Metres
Maximum Lift Height With Stabilisers:	16.7 Metres
Maximum Capacity At Max Lift Height With Stabilisers :	4000 KG
Max Capacity at Full Reach With Stabilisers:	600 KG
Max Forward Reach With Stabilisers:	12.50 Metres

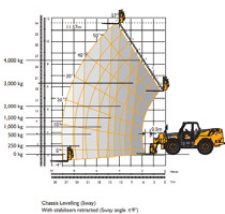
17m JCB Telehandler



LIFT PERFORMANCE – STABILISERS EXTENDED



LIFT PERFORMANCE – STABILISERS RETRACTED



All Telehandlers are available with a range of special attachments such as:  
**FORKS | BUCKET | GRAIN BUCKET | DUNG FORKS | TIPPING SKIP |  
BLOCK GRAB | 4-in-1 BUCKET | LIFTING HOOK etc.**

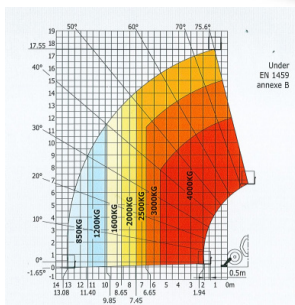
(With Stabilisers)

### 18 Metre Telescopic Handler Manitou MT1840

Weight:	11,630 KG
Height with Cab (& Flashing Light):	2.693 Metres
Width:	2.420 Metres
Width With Stabilisers Extended:	3.793 Metres
Length- Transport Position:	7.474 Metres
Max Lift Height:	17.55 KG
Max Capacity:	4,000 KG
Capacity At Max Lift Height:	4,000 Metres
Max Forward Reach:	13.080 Metres
Max Forward Reach With 1 Ton Load:	11.400 Metres
Reach At Maximum Height:	1.940 Metres
Stabilisers:	Yes
High Capacity Grain Bucket:	2 M <sup>3</sup>



18m Manitou Telehandler



All Telehandlers are available with a range of special attachments such as:  
**FORKS | BUCKET | GRAIN BUCKET | DUNG FORKS | TIPPING SKIP |  
 BLOCK GRAB | 4-in-1 BUCKET | LIFTING HOOK etc.**

# TELEHANDLERS

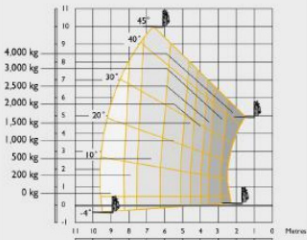
## Specifications

(With Stabilisers)	20 Metre JCB 540-200
Weight:	12,985 KG
Overall Height:	2.72 Metres
Width With Stabilisers:	3.82 Metres
Length To Front Of Carriage:	6.81 Metres
Maximum Lift Height With Stabilisers:	20.00 Metres
Maximum Capacity At Max Lift Height With Stabilisers:	4,000 KG
Maximum Capacity At Full Reach With Stabilisers:	200 KG
Maximum Forward Reach With Stabilisers:	15.90 Metres

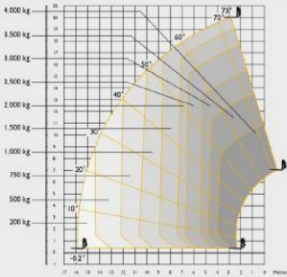
20m JCB Telehandler



540-200 Stabilisers retracted Sway



540-200 Stabilisers extended Sway



All Telehandlers are available with a range of special attachments such as:  
**FORKS | BUCKET | GRAIN BUCKET | DUNG FORKS | TIPPING SKIP |  
 BLOCK GRAB | 4-in-1 BUCKET | LIFTING HOOK etc.**



### John Deere 6R Series - 6195R

Rated power (97/68EC), hp (kW):	195 (143)
Wheelbase:	2.800 Metres
Width:	2.550 Metres
Length:	3.160 Metres
Height:	5.050 Metres
Maximum lift capacity at hook - Front:	4,000 Kg
Lift capacity through full lift range (OECD at the hook) - Front:	3,300 Kg
Lift capacity through full lift range (OECD 610mm) - Rear:	4,850 Kg
Lift capacity through full lift range (OECD 1800mm) - Rear:	3,400 Kg





# WOOD CHIPPERS (TRACKED)

## Specifications

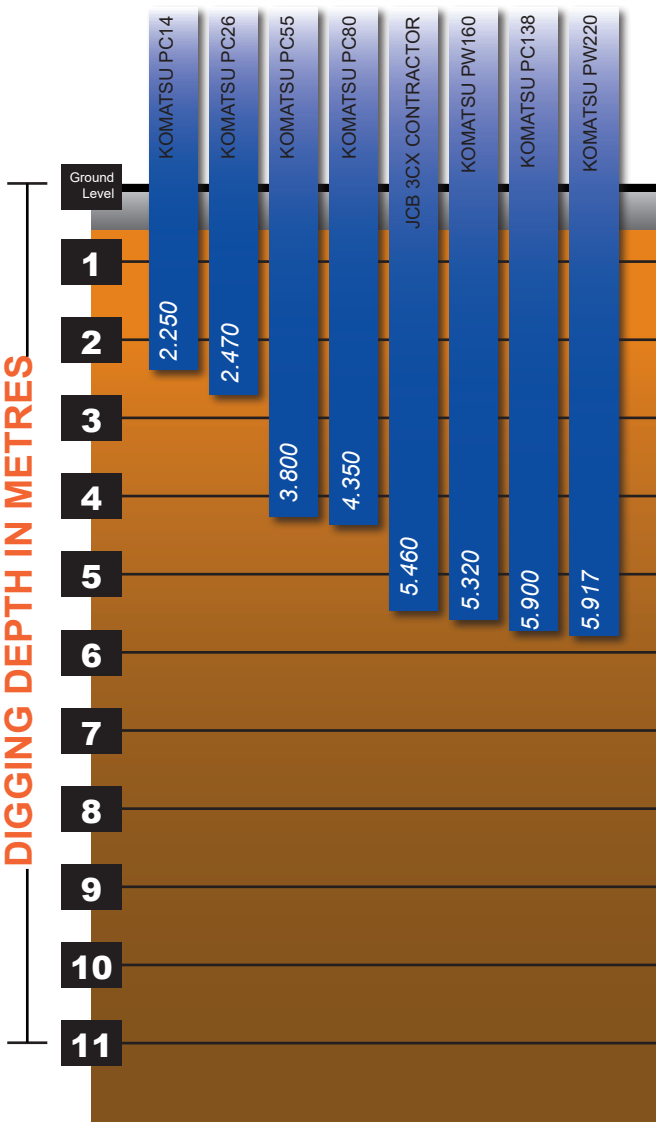
### Timberwolf TW280TFTR 8” Tracked Wood Chipper

Width:	1410 mm
Width (Transport) :	2740 mm
Height :	2320 mm
Height (transport) :	1460 mm
Weight :	1600 KG
Chips up to :	200 mm
Maximum Power :	33 KW
Fuel Capacity :	36 LTS

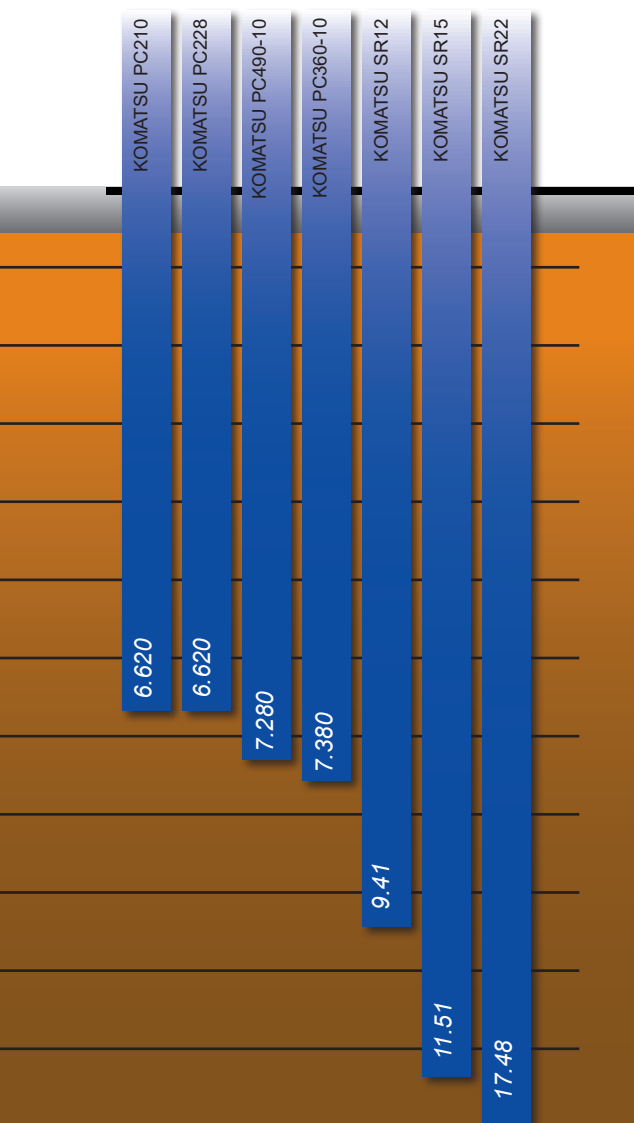
Self-contained tracked wood chipper capable of chipping up to 200mm logs.



# EXCAVATOR DIGGING DEPTH

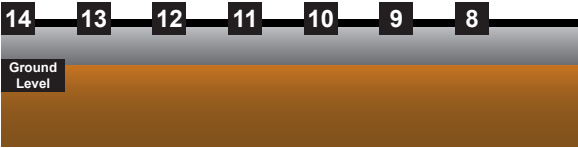
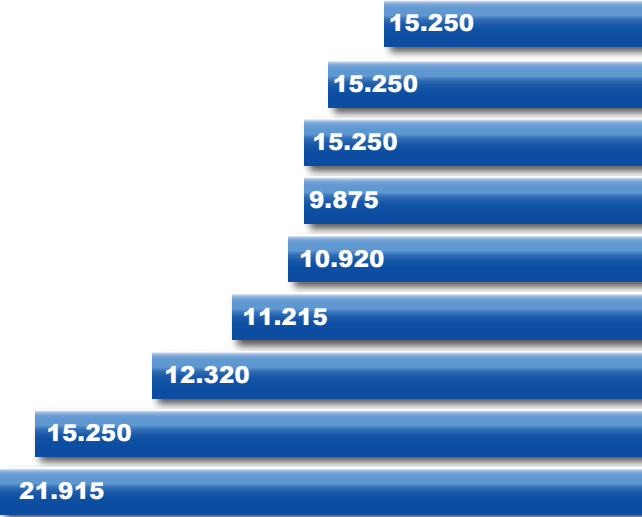


# EXCAVATOR DIGGING DEPTH



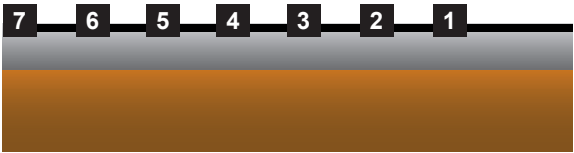
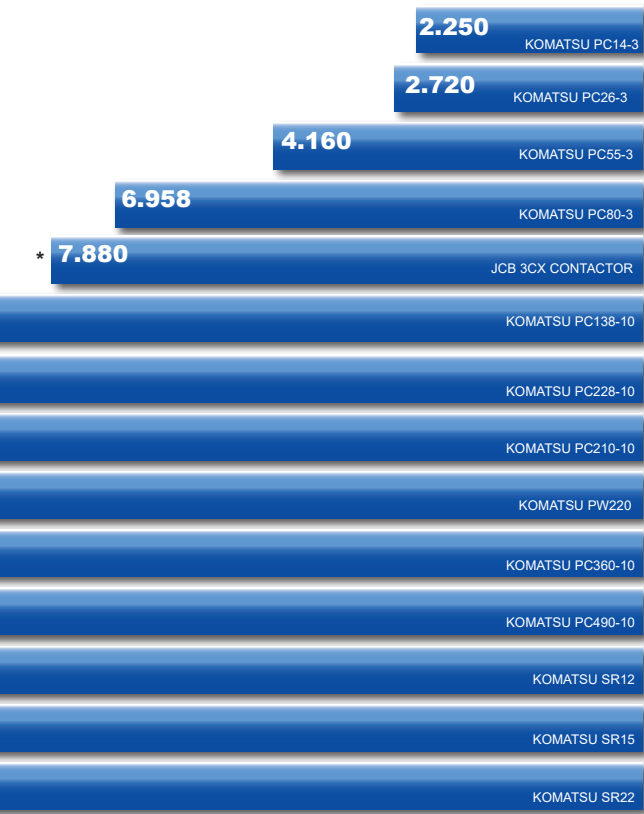
# EXCAVATOR GROUND REACH CHART

Measured from the centre of the Slew Ring



# EXCAVATOR GROUND REACH CHART

Measured from the centre of the Slew Ring



\*JCB 3CX Contractor is measured from the centre of the rear wheel including 'ExtraDig'

## ATTACHMENTS

Over recent years, as part of our commitment to customer care, we at H.E. SERVICES have listened to our customers and have made substantial investments in attachments for excavators. This makes our equipment more versatile for our customers by being able to carry out tasks that are either still mainly carried out by hand or save a second machine being hired in for one job.

Wherever possible we have developed attachments with Masterhitch Europe Ltd to suit the Masterhitch Quickhitch fitted to our machines from 3 Tons to 45 Tons. This gives amazing time saving when it comes to changing from bucket to attachment and vice-versa as well as greater versatility.

## Petrochemical Contracts or Similar?

No problem, all H.E. SERVICES machinery can be fitted with Chalwyn Valves and Spark Arrestors if required as optional extras. Extra notice is required to allow fitting and there is a supplementary charge.

## Height & Slew Restrictions

Certain jobs require working underneath overhead obstructions like bridges, cables etc. In this case the excavator might need to be fitted with a "height restrictor". All H.E. SERVICES excavators can be fitted with a height restrictor or a slew restrictor for a supplementary charge.

## Safety Lift Systems

H.E SERVICES' can offer an Onboard Safety Lift System, If required. Extra notice is required to allow fitting and there is a supplementary charge.

# DIGGING GRABS

In addition to purpose built Long Reach Excavators, H.E. SERVICES offer Digging Grabs for use with standard excavators and their Masterhitch systems. These arms are fully interchangeable with Masterhitch buckets and attachments. Each arm gives standard excavators extra reach/dig depth, and are fitted as follows:

Digging Grabs		
	14DG	21DG
Fits all machines fitted with Masterhitch type	MH15	MH22
Approximate addition to standard reach/depth	3m 1.2 & 3m extensions also available	3m



## DIGGING CLAMSHELL GRAB (WITH TEETH)

**Fits:** 14 Ton, 22 Ton, 36 Ton Machines.

**Application:** Digging shafts or limited swing excavations, and extensions available.



## RE-HANDLING CLAMSHELL GRAB (NO TEETH)

**Fits:** 15 Ton, 22 Ton, 36 Ton Machines.

**Application:** For re-handling loose material such as sand, shingle etc.



## Ripper Teeth

**Fits:** 8 Ton, 15 Ton, 22 Ton, 36 Ton, 49 Ton Machines.

**Application:** For extracting stumps, breaking hard ground etc.

# EXCAVATOR ATTACHMENTS



## **Power Rakes 4/5/7 Tyne**

**Fits:** 8 Ton, 15 Ton, 22 Ton Machines.

**Application:** For clearing wooded areas (roots) etc.



## **Brush Cutters**

**Fits:** 3 Ton, 5 Ton, 8 Ton, 14 Ton, 20 Ton Machines.

**Application:** Excavator mounted brush cutter to reduce all treated material to small size material.



## **Kerb Lifters**

**Fits:** 1 Ton, 3 Ton, 5 Ton, 8 Ton Machines.

**Application:** For handling kerbs etc.



## **Excavator Mounted Pallet Forks**

**Fits:** 8 Ton, 15 Ton, 22 Ton, 35 Ton, 49 Ton Machines.

**Application:** For re-handling pallets etc with an excavator arm.



## **6-in-1 Bucket**

**Fits:** 8 Ton Machines

**Application:** For Dozing, Loading, Digging, Grabbing, Spreading & Grading.



## **Dedicated Pulverizers**

**Fits:** 15 Ton, 22 Ton, 36 Ton, 49 Ton Machines.

**Application:** Perfect for the demolition of buildings and walls. Also for crushing large concrete lumps.



## **Dedicated Rotating Shears**

**Fits:** 15 Ton, 22 Ton, 36 Ton, 49 Ton Machines.

**Application:** These dedicated units are built for cutting steel beams.



# EXCAVATOR ATTACHMENTS



## Tilting Blades

**Fits:** 3 Ton, 5 Ton, 8 Ton, 15 Ton, 22 Ton Machines.

**Application:** Grading at different angles.



## Allu Bucket

**Fits:** 22 Ton, 36 Ton Machines.

**Application:** screening, crushing, aerating, mixing and loading site materials.



## Magnets

**Fits:** 15 Ton, 22 Ton Machines.

**Application:** Excavator mounted magnet for re-handling ferrous metals.



## Trapezoidal Buckets

**Fits:** 5 Ton, 8 Ton, 15 Ton, 22 Ton, 36 Ton, 49 Ton Machines.

**Application:** For cutting angled or 'V' trenches/ditches.



## Reed Buckets

**Fits:** 15 Ton, 22 Ton & Long Reach Machines.

**Application:** For cutting and re-handling reeds.



## Shaker Buckets

**Fits:** 8 Ton, 15 Ton, 22 Ton Machines.

**Application:** For sorting larger objects from small.



## Crusher Buckets

**Fits:** 14 Ton & 22 Ton Machines

**Application:** Crushing concrete, this attachments breaks down large chunks into easier to handle fractions.

# EXCAVATOR ATTACHMENTS



## **Mounted Vibrators**

**Fits:** 14 Ton, 22 Ton and 36 Ton Machines.

**Application:** Perfect for inserting and removing sheet piles.



## **Rock Grapples (Hydra Grapple) / Non Rotating Hydraulic Grapples**

**Fits:** 8 Ton, 14 Ton, 22 Ton, 36 Ton, and 49 Ton Machines

**Application:** Demolition, waste & timber handling, scrap metal & general sorting applications.



## **Free Rotating Pipe Pushers**

**Fits:** MH8 hitch (3CX, Hydradig, PC80 and PC55) or on an MH4 hitch (PC26).

**Application:** For pushing or pulling pipes in and out of trenches and ducting.



## **Pole Grabs**

**Fits:** 13Ton, 22 Ton, 15M Long Reach, 22M Long Reach.

**Application:** Extracting and positioning poles and posts into a number of ground surfaces.



## **Pipe Lifters**

**Fits:** 14 to 22 ton Excavators

**Application:** For lifting and handling pipes



## **Turf Cutting Bucket**

**Fits:** 14 & 22 ton Excavators

**Application:** For Turf Cutting, Turf Cutting Bucket 72" wide.



## **Skeletal DM**

**Fits:** 8 Ton, 15 Ton Machines.

**Application:** For clearing ditches that need draining, and clearing vegetation.

# EXCAVATOR ATTACHMENTS



## Compactor Plates

**Fits:** 3 Ton, 5 Ton, 8 Ton, 15 Ton, 22 Ton Machines.

**Application:** For compacting small areas and trenches.



## Fence Post Driver

**Fits:** 15 Ton, 22 Ton Machines.

**Application:** Ideal for moving lengths of pipe and tubing.



## Augers & Flights

**Fits:** 3 Ton, 5 Ton, 8 Ton, 15 Ton, 22 Ton Machines.

**Application:** For boring holes in soft to medium ground. 1.5m deep. 1.5m extensions available.

**Flight Sizes Available:**

9", 12", 18", 24"



## Breakers

**Fits:** All Size machines Except Super Long Reaches.

**Application:** For breaking out concrete, rock or tarmac. Underwater Kits Available.\*



## Tilt Rotator

**Fits:** 8 Ton Machines.

**Application:** The Tilt Rotator allows continuous 360° swivel of bucket and 45° tilting each way, for complicated grading tasks.



## Tree Shears

**Fits:** 8, 14 & 22 Ton Excavators.

**Application:** Allows the excavator operator to have full control of the tree during operation. Maximum cutting diameter -300mm

**Heavy Duty Tree Shears available for** 14 & 22 ton Excavators Maximum cutting diameter -600mm

\* Supplementary Charge

# EXCAVATOR ATTACHMENTS



## Masterclaw

**Fits:** 15 Ton, 22 Ton Machines.

**Application:** For re-handling, demolition and clearance work.



## Rotating Selector Grabs

**Fits:** 8 Ton, 15 Ton, 22 Ton, 36 Ton Machines.

**Application:** For re-handling and demolition work.



## Pile Croppers

**Fits:** 15 Ton Excavators and upwards.

**Application:** For Pile Cropping round and square piles.



## Concrete Crushers

**Fits:** 14 to 22 Ton Excavators.

**Application:** Very powerful fixed head crusher. Ideal for top down and secondary demolition, making disposal and recycling concrete easier by separating the re-bar from the concrete.



## Concrete Skips

**Fits:** For 8 to 22 ton Excavators

**Application:** allows the operator the freedom to choose the best way to pour up to one cubic metre of concrete easily and evenly to maximise both efficiency and, more importantly, safety.



## Excavator Vacuum Attachment

**Fits:** For 16 & 22 ton Excavators

**Application:** It can be used in application areas such as all manual digging operations, exposing utilities, excavation of test holes, Cleaning track ballast and cleaning road ditches & drainage shaft



## Rotary Screening Bucket

**Fits:** 8 Ton, 14 Ton & 22 Ton Excavators

**Application:** Sorting larger and small pieces of aggregate and building material.

# EXCAVATOR ATTACHMENTS



## **Masterclaw**

**Fits:** 15 Ton, 22 Ton Machines.

**Application:** For re-handling, demolition and clearance work.



## **Rotating Selector Grabs**

**Fits:** 8 Ton, 15 Ton, 22 Ton, 36 Ton Machines.

**Application:** For re-handling and demolition work.



## **Pile Croppers**

**Fits:** 15 Ton Excavators and upwards.

**Application:** For Pile Cropping round and square piles.



## **Hydraulic Rotating Grapple**

**Fits:** 8 Ton Excavators and upwards.

**Application:** For Demolition, waste & timber handling, scrap metal & general sorting applications.

# PLANT ACCESSORIES



## 1000 Litre Bowsers

**Application:** For re-fueling machines on site.

**Capacity:** 1000 litres (includes built in dispensing pump).

**Weight:** 250kg



## 2000 Litre Bowsers

**Application:** Site re-fuelling of machines, not road legal.

**Capacity:** 2000 litres (includes built in dispensing pump).



## 2000 Litre Smart Fuel Bowser

**Application:** Site re-fuelling of machines, not road legal. Solar PV panel to charge the on board batteries, USB charging ports.

**Capacity:** 2000 litres (includes built in



## Water Bowsers

**Application:** site or highway tow with or without dust suppression.



## Pressure Washer Bowsers

**Application:** Water Bowsers with Diesel Pressure Washer.



## Plant Trailers

**Capacity:** Up to 3 ton Mini Excavators.

**Notes:** Pin or Ball Coupling.



## 40' Articulated Trailer (Tractor) with bogey & air brakes

Length 40ft.

Air Brakes.

Side Guard protection & side bin.



## Bog Mats

**Application:** Creating a steady drivable surface in muddy, slippery grounds, providing traction for all machinery.

# PLANT ACCESSORIES



## Cab Guards

**Fits:** 3, 5, 8, 14, 22, 36 & 49 Ton Excavators - Super Long Front Machines.

**Application:** Window protection to reduce potential damage to machines left on-site overnight, (can not be used with screen guard).



## Chalwyn Valves

**Fits:** Most machines, Please Ask.

**Application:** Required for petrochemical contracts or similar, (extra notice is required to allow for fitting)



## Spark Arrestors

**Fits:** Most machines, Please Ask.

**Application:** Required for petrochemical contracts or similar, (extra notice is required to allow for fitting).



## Heavy Duty Front Screen Guards

**Fits:** 114 Ton, 22 Ton, 36 Ton & 49 Ton Excavators.

**Application:** Front screen protection for additional operator safety whilst working on projects where extra guarding is deemed necessary.



## 360° CAMERA SYSTEM

**Fits:** 8/14/22/35/49 Ton Machines & Telehandlers

**Application:** All around vision camera offers operator 360° birdseye view around machine, for added safety.



## James Fisher Prolec System

**Application:** Monitors load, height and slew, while using virtual walls to provide full envelope control.



## Boxing and Safety Rings

**Fits:** 14 Ton, 22 Ton, 36 Ton, 49 Ton Machines

**Application:** Extra safety when working at height, fitted to the rear of the Excavator

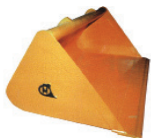
# TELEHANDLER ATTACHMENTS



## Fork Extensions

**Fits:** Telehandler & Fork Trucks.

**Application:** For handling oversized loads.



## Re-Handling Buckets

**(Standard High Capacity)**

**Fits:** Telehandlers.

**Application:** For moving quantities of light material; paper, grain etc.



## Skippys

**Fits:** 9M Telehandlers & Above.

**Application:** Transporting materials around sites.



## Snow Ploughs

**Application:** The Snow Plough is designed to help clear snow.



## Sweeper/Collectors

**Application:** Maintaining sites and roadways, ensuring free from debris and materials.



## Tipping Skips

**Application:** Moving sand, mortar, rubbish etc.



## Lifting Hooks

**Fits:** Fork Trucks & Telehandlers.

**Application:** For suspending loads from a hook.



## Master Squeegees

**Application:** Pushing waterlogged materials across a hard surface and yard scraping.



# TELEHANDLER ATTACHMENTS



## Block Grabs

**Fits:** Telehandlers.

**Application:** Lifting piles of bricks, blocks and slabs etc.

**Notes:** Used with Telehandlers with a lifting hook.



## Dung Forks (with optional clamp)

**Fits:** Telehandlers & Skidsteers.

**Application:** For handling waste, paper, dung, straw etc.



## Hydraulic Forks Positioner

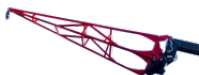
**Fits:** The adjustable space goes from 230mm mm to 1330 mm.

**Application:** The fork positioners eliminate the manual fork shifting, increasing the operator safety.



## Mini Snow Ploughs

**Application:** Perfect for the clearance of snow.



## Roof Truss Jib

**Fits:** Telehandlers.

**Application:** Lifting roof truss & other lightweight materials to help you get to those hard to reach areas.



## Hydraulic Side Shift Forks

**Fits:**  $\pm 200$ mm sideshift of load for accurate placement.

**Application:** The side-shift carriages move forks horizontally on the fork carriage and enable exact pick up or depositing of the loads in tight spots.

## EXCAVATORS USED AS CRANES

In addition to the Health & Safety at Work etc Act 1974, the Lifting Operations and Lifting Equipment Regulations 1998 (LOLER) apply.

Copies of these regulations are available online or from the H.S.E or the C.I.T.B.

Customers intending to carry out Lifting Operations using excavators should ensure that they fully comply with these regulations.

Most of H.E. SERVICES excavators are fully tested, inspected and capable of lifting. Please refer to each machine specification for the Safe Working Load.

Copies of all documents needed, including certificate of newness, 12 monthly inspection, test certificates etc are available and can be provided in hard copy, fax or by email.

## CAB, CANOPY OR FRAME REMOVAL

H.E. SERVICES accepts that there are times where because of access restrictions or working height within buildings it is necessary to remove cabs, canopies or frames from plant. We can provide such a service for our customers subject to the following provisions;

- 1) This will only be done with a specific written request from the customer.
- 2) The customer will be deemed to accept full responsibility in accordance with our Terms & Conditions of Hire (In particular Clause 42 - Cab removal)
- 3) The customer should take steps to outline additional dangers to operators and provide any additional safety training or PPE equipment deemed necessary.
- 4) A small additional charge will be made to the customer by H.E. SERVICES for removal and refitting.
- 5) The customer should carry out a Risk Assessment.
- 6) The plant should ideally be used on level ground

## OPERATOR COMPETENCE

It is the responsibility of the employer under the Health & Safety at Work etc. Act 1974 Section 22C, to ensure that operators of construction plant are competent. There are many schemes such as the CSCS, which records training achievement, but it is not a legal requirement to subscribe to any of these. They do not necessarily guarantee a measure or certificate of competence, but are generally a good indication.

H.E. SERVICES tests the competence of all of its operators and recommends that customers do likewise with their operators before entrusting expensive and potentially lethal equipment to them. Where requested by customers, H.E. SERVICES can supply operators who hold a CSCS card, but advance notice must be given. All of our operators also hold an H.E. SERVICES Certificate of Competence for the machines that they are certified to operate, and in this case they have been thoroughly trained, checked and tested by ourselves.

## SITE SAFETY

Where fencing the areas of excavation is impractical, excavations or holes should be covered or guarded. The local Electricity/Gas/Water Board should be consulted when working near overhead or underground services. Excavators should not be used within 0.5m of known underground power cables or other services. The service provider will give information and locations upon request, free of charge. All excavations of 1.0m deep or more should be shored to prevent injury to workers entering the excavation.

## SECURITY

H.E. SERVICES (Plant Hire) Ltd can offer for a small additional charge, machine security systems, which are monitored 24 hours a day, and include satellite tracking and a 3 point key pad immobiliser which will usually reduce customers hired in plant insurance.

## ENVIROMENTAL POLICY

H.E. SERVICES acknowledges that there are inevitable environmental impacts associated with our daily operations. H.E. Services is committed to reducing the environmental impact of our services as well as providing continuous environmental improvements to be included in our business model and ethos. H.E. SERVICES is committed to ensuring continued compliance with all relevant environmental legislation and regulations as well as reducing the impact on climate change.

H.E. SERVICES is committed to the three R's: reduce, reuse and recycle. Specific examples include: maximum utilisation of transport, the use of electric and gas powered vehicles as opposed to diesel and an extensive use of solar PV and solar thermal panels.

## QUALITY POLICY

H.E. SERVICES will ensure that the specific needs of our customers are very clearly understood and are met or exceeded through close liaison at all stages.

H.E. SERVICES' quality policy calls for continual improvement in our quality management activities. We work closely with our customers and suppliers to establish the very highest quality standards and adopt the forward looking view on future business decisions which may have quality impacts. We conduct all of our work to the highest professional standards and we train our staff in the area of quality management, to include the importance of meeting and exceeding our customers' requirements. Our documented quality management system satisfies the requirements of ISO 9001 and it is reviewed on a regular basis.

## What are the Benefits of Hiring from H.E. SERVICES

- **Maximum Productivity**

The very best plant that money can buy, purchased new, to ensure that you get maximum productivity.
- **Latest Technology**

Replacement of plant at between two and three years ensures that new marques are quickly integrated into the fleet to give greater productivity. Do you know any manufacturer that doesn't claim at least a 10% improvement every time a new model is launched?
- **58 Point Inspection Check**

Every H.E SERVICES machine has an inspection check, covering at least 58 items, before each and every hire.
- **Less Breakdown**

Regular servicing at O.E.M. recommended intervals, to ensure our machines are probably the most reliable in Britain. Of course they can occasionally break down, but much less often than poorly maintained ones.
- **Time Saving Changing Buckets**

A Masterhitch Quickhitch is fitted to every H.E. SERVICES excavator between 2 and 50 tons, so the more you change buckets, the more time you save. On average, this can save an hour per day, or up to 12.5% of the hire rate. That can be worth up to £6 per hour!
- **Rapid Response**

Fully equipped mobile workshops guarantee the fastest response possible to mechanical problems and the highest fix rate in the industry.
- **24 Hour Service**

True 24 hour service for every customer.
- **And Finally**

The back up and commitment of Europe's largest excavator fleet and what is undoubtedly the most experienced and efficient Management in the Plant Hire industry.

- Breakdown Costs
- Work lost because of breakdowns
- Labour costs changing buckets
- Work lost while changing buckets
- Demurrage from hauliers
- Cancellation charges
- Your time reorganizing
- Poor performance due to lack of servicing or
- Outdated machines
- Extra costs where operators use bigger buckets rather than change them - (muck away, concrete, shingle, backfill etc)
- Cost of over-runs
- Poor performance in front of your clients

### **REMEMBER... £'S PER HOUR OR PER WEEK IS NEVER THE WHOLE STORY**

#### A True Story!

A competitor's regular customer hired a standard JCB 3CX for three days each time he built a base for a mobile phone mast. The job involved regular bucket changes, for site stripping, footings, levelling, drainage, cable trenches etc.

He was persuaded to hire our JCB 3CX complete with a Masterhitch, and found that a two day hire was all that was necessary, such were the time savings on bucket changes, and quality of operator. Also whilst working, he came across concrete and as the machine is piped for a breaker, he simply called us up and we despatched one immediately.

He thought we were expensive at £1.35 per hour more than our competitor, but he now saves over £190.00 on each site.

The moral of this story - paying slightly more really can result in paying substantially less!

# SERVICE, QUALITY & VALUE FOR MONEY

H.E Services continually strives to provide its customers with the very best service at competitive rates. Our policy of involving our customers and listening to their needs has revealed that the areas of greatest importance to them are:

- Reliable machines in good working order
- Quickhitches (where appropriate)
- 24 Hour service order
- An efficient delivery service
- Helpful, friendly staff
- All of this at competitive rates
- Correct invoicing and paperwork

By investing heavily in both our plant and our service, we believe we offer our customers the best combination of quality and value for money available in excavator hire today.

## Our Promise to Our Customers

We will endeavour to treat every customer fairly, courteously and with care and consideration for their individual requirements.

We will continue to train our staff and develop our systems to improve our service to all customers.

Being human, we will occasionally make mistakes, but we will keep these to an absolute minimum, and act immediately to rectify them.

If you are happy with our service -

**Please tell everybody!**

If you are not happy for any reason -

**Please tell me.**

Thank you.



Chairman

E-mail: [chairman@heservices.co.uk](mailto:chairman@heservices.co.uk)

# Precis of Terms & Conditions

All plant is hired subject to H.E. SERVICES' standard Terms and Conditions of Hire, a copy of which is available on request and on our website. The following is extracted for your convenience:

1. Insurance of all hired plant and equipment is the responsibility of the hirer, until collected by H.E. Services from site or returned safely to our depot.
2. Charges will be made to cover plant and equipment returned in a dirty or damaged condition.
3. All plant is supplied full of fuel/oil/grease etc. as necessary, which is chargeable at our current rates, if deficient upon return.
4. Transport is not inclusive in the hire rates, but is available if required.
5. Value Added Tax is not included in the hire rates, and is charged extra at the prevailing rate.
6. *Cleared funds in advance of the hire are required on all non-account transactions.*
7. Long hire and contract hire rates can always be negotiated.
8. H.E. SERVICES reserves the right to alter prices without notice.
9. Puncture repairs and tyre damage are the responsibility of the hirer.
10. 24 hours notice of the hire termination MUST be given to our depot of hire. 72 hours for "notifiable loads"
11. 2.5% monthly Compound Contractual Interest may be added to overdue accounts
12. Self drive rates are per 50 clock hour week and per 10 clock hour day maximum, additional pro-rata charges may be applied for excess hours worked.
13. Based on the weekly rate, all hires less than a week will be charged 75% for 1 day, 85% for 2 days, 90% for 3 days or the full weekly rate for 4-5 days.
14. Delivery/Collection will be charged for every movement of each machine (even if two or more machines are delivered/collected at the same time) at the rates quoted or prevailing the time.
15. All machines supplied with breaker and bucket(s) are charged at breaker rate until the breaker is off hired and returned to our depot.
16. For self drive machines, the 'day' is a normal working of day (of up to 10 hours), NOT a 24 hour period.
17. All weights and measurements provided in the H.E. SERVICES' literature are approximate and subject to change without notice. No guarantee is offered regarding their accuracy.
18. All prices quoted are £ Sterling.



# Weights & Measures

## Length

1 millimetre	=	100 micrometres	=	0.0394 inch
1 centimetre	=	10 millimetres	=	0.3937 inch
1 metre	=	100 centimetres	=	1.0936 yards
1 kilometre	=	100 metres	=	0.6214 miles
1 inch	=	-	=	2.54 centimetres
1 foot	=	12 inches	=	30.48 centimetres
1 yard	=	36 inches	=	0.9144 metres
1 mile	=	1760 yards	=	1.6093 kilometres

## Capacity

1 cu decimetre	=	1000 cu centimetres	=	0.0353 cu foot
1 cu metre	=	1000 cu decimetres	=	0.0353 cu yards
1 litre	=	1 cu decimetre	=	0.22 gallon
1 cu yard	=	27 cu feet	=	0.7646 cu metre
1 pint	=	4 gills	=	0.5683 litre
1 gallon	=	8 pints	=	4.5461 litres

## Area

1 sq metre	=	10,000 sq centimetres	=	1.196 sq yards
1 hectare	=	10,000 sq metres	=	2.4711 acres
1 sq kilometre	=	100 hectares	=	0.3861 sq mile
1 sq foot	=	144 sq inches	=	0.0929 sq metre
1 sq yard	=	9 sq feet	=	0.8361 sq metre
1 acre	=	4840 sq yards	=	4046.9 sq metres

## Weight

1 gram	=	1000 milligrams	=	0.0353 ounce
1 kilogram	=	1000 grams	=	2.2046 pounds
1 tonne	=	1000 kilograms	=	0.9842 ton
1 ounce	=	437.5 grains	=	28.35 grams
1 pound	=	16 ounces	=	0.4536 kilogram
1 stone	=	14 pounds	=	6.35 kilograms
1 ton	=	2240 pounds	=	1.016 tonnes

# Notes



# Notes

Inch

1

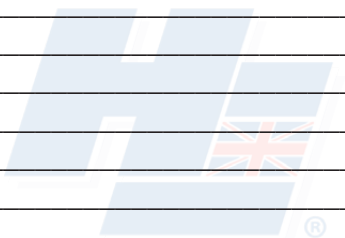
2

3

4

5

6



# WORLD LEADERS IN DIGGER HIRE



## H.E. SERVICES (PLANT HIRE) LIMITED

National Hire Hotline - 0208 804 2000

Out Of Hours - 0208 804 2000

Accounts - 0871 22 70707\*

Textline - 07842 949530

### DEPOTS

Ashford - 01233639831

Cambridge - 01223855332

Cardiff - 02920850086

Durham - 01913733883

East Midlands - 01327301111

Exeter - 01395239375

Hungerford - 0148873444

Liverpool - 01744453466

Strood - 0208 804 2000

West Midlands - 01905774466

### H.E. GROUP OF COMPANIES

Evision Electric Vehicles - 02087557919

Masterhitch - 01634290022

Diggerland - 08712277007\*

Diggerland Plant Training School -  
01634 295355



Reg Office: Whitewall Road, Strood, Kent, ME24DZ  
Registered in England No: 3754961

\*Calls to 08 numbers cost 10p per minute, plus your phone company's access charge

\*\*Calls to 09 numbers cost 55p per minute, plus your phone company's access charge