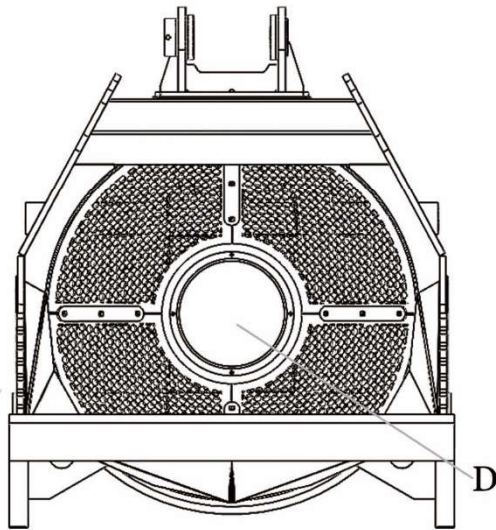
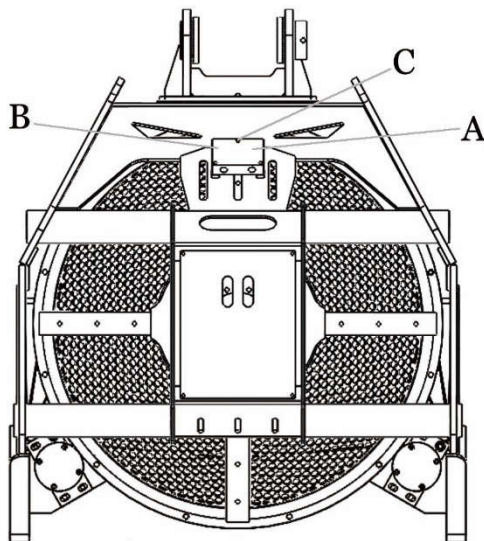


## Precautions for Use and Maintenance

Front



Back



1. Loose soil, sand and river sand sieving operations are available to our rotary screening bucket. It can only be used for the general earthmoving, but not heavy duty work condition. Excavator climbing by bucket and supporting by the bucket for climbing to trailer are forbidden.

2. The hydraulic pipe system is composed of an oil inlet pipe(connect to "A"), an oil outlet pipe(connect to "B") and an oil return pipe (directly connected to the motor and the hydraulic oil tank). The rotating motor is similar to the walking motor structure, and can only rotate in one direction. The ideal operating temperature of the hydraulic oil is 30 degree centigrade to 50 degree centigrade, the highest temperature won't be higher than 70 degree centigrade

3. The fluid must at least conform to the following levels:

- NAS1638 Standard Grade 9
- SEA, ASTM and AIA Standard Grade 6
- ISO/DRW 4406 Standard Grade 18/15
- NAS1638 Standard Grade 9 is recommended.

The filter with 100 filter fineness will offer better oil grade.

4. The speed of this product can be adjusted. With an 8mm hex wrench, you can adjust the motor speed from "C".. When installing the machine, the motor speed needs to be adjusted for different materials.

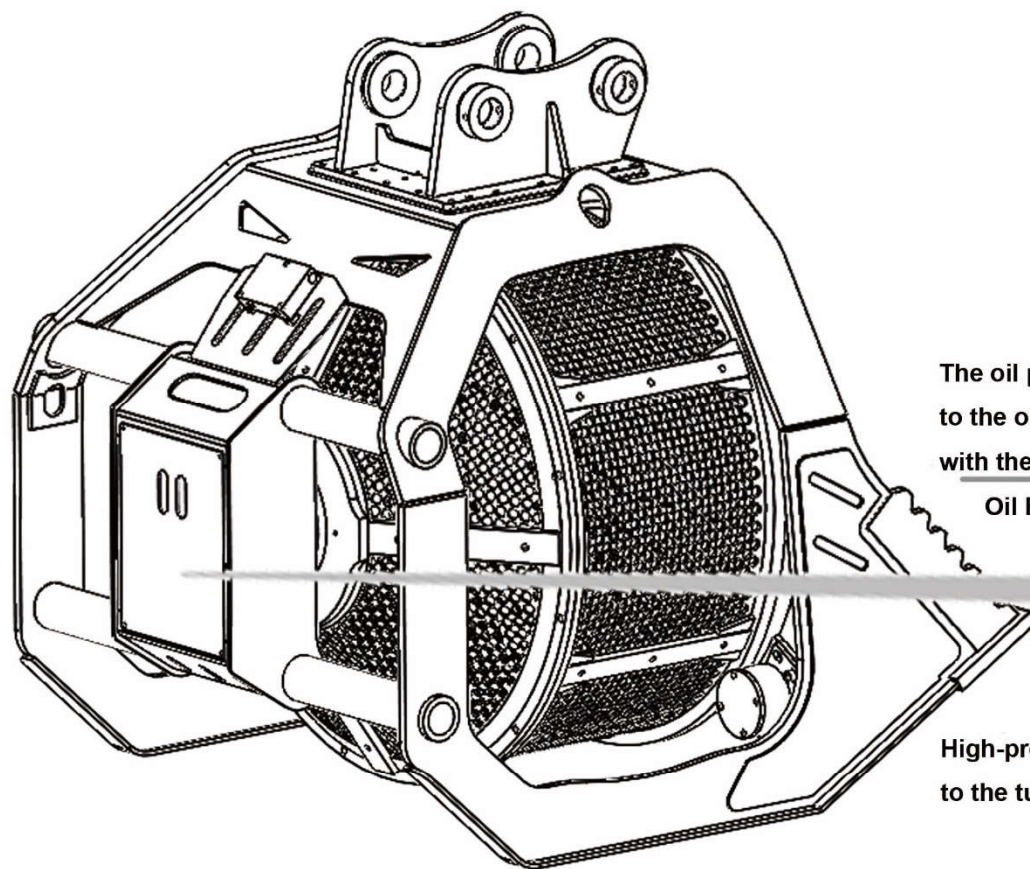
5. Operation:

- 1) After installation, the excavator needs to run smoothly at idle speed for 5-10 minutes to expel the air that may exist in the motor.
- 2) Check the bolt tightening of each part before using each time, and run it unloaded for 2-3 minutes after starting.
- 3) Please change the gear oil each 300 hours from "D".

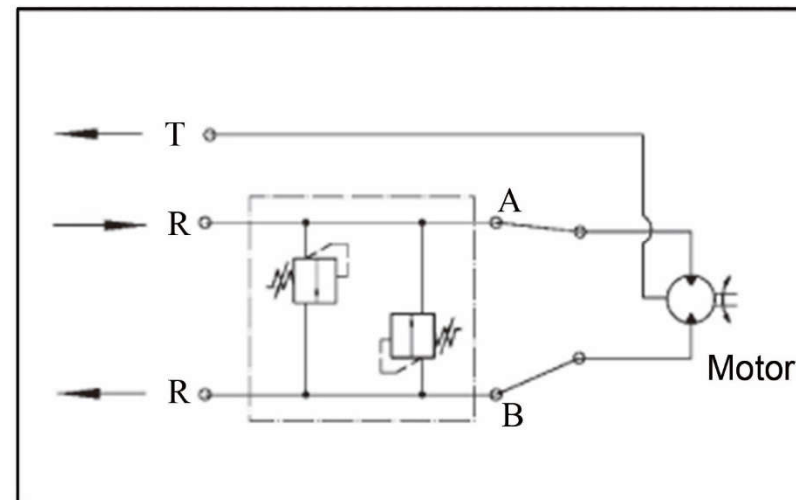
6. Our warranty is 12 months or 2000 hours. The normal wear, whole frame tearing, and the side teeth & adapters broken is not covered by the warranty. Unauthorized welding or structure modification will make the warranty invalid.

Precautions for Use and Maintenance





Oil return tube for the motor shell connected to the oil tank.



T

The oil piping arrangements  
to the oil tank along  
with the arm and the boom

Oil Return Pipe

R

High-pressure tube connected  
to the tube of the arm

R

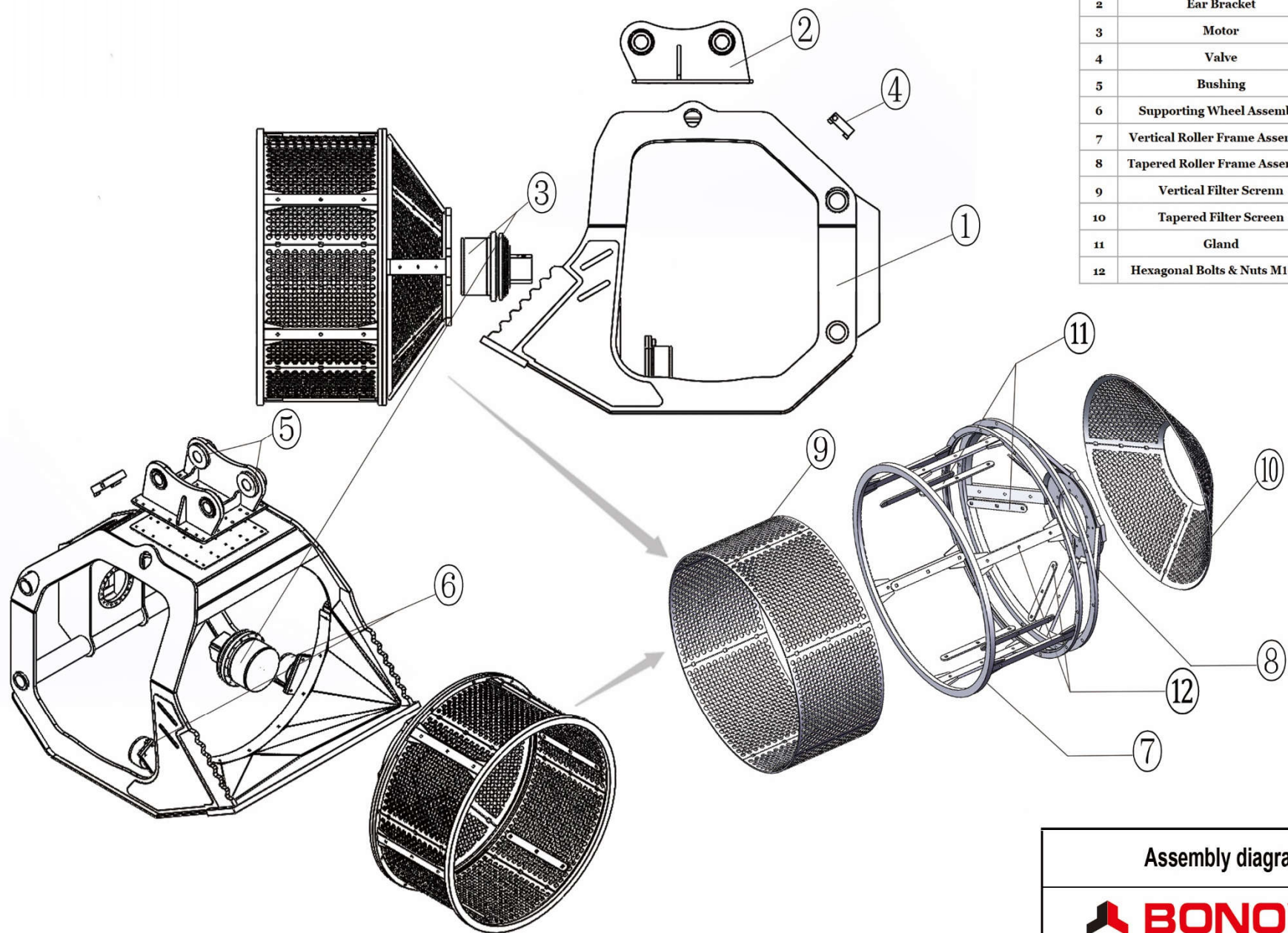
Seal it off

High-pressure tube connected to the tube of the arm

Functional Diagram of Oil Circuit

 **BONOVO**





NO.	Part Name	Quantity
1	Bucket Body	1
2	Ear Bracket	1
3	Motor	1
4	Valve	1
5	Bushing	4
6	Supporting Wheel Assembly	2
7	Vertical Roller Frame Assembly	1
8	Tapered Roller Frame Assembly	1
9	Vertical Filter Screen	6
10	Tapered Filter Screen	4
11	Gland	10
12	Hexagonal Bolts & Nuts M16*70	30

Assembly diagram

